

Make a Positive Contribution

Engage in law abiding and positive behaviour in and out of school

Young Offenders (Northamptonshire Police 2007)

The table below right shows the number of offences and offenders, and the rate of offenders in the districts of Northamptonshire. The highest rate of offenders was in Corby with 62.68 offenders per 1000 population. In comparison, the lowest rate of offenders was in South Northants, 15.40 offenders per 1000 population.

| | Number of offences | Number of Offenders | Rate of offenders (per 1000 population aged 5-19) |
|-----------------|--------------------|---------------------|---|
| Corby | 634 | 720 | 62.68 |
| Northampton | 1829 | 2034 | 53.53 |
| Wellingborough | 673 | 739 | 50.97 |
| Kettering | 587 | 657 | 40.56 |
| East Northants | 391 | 424 | 25.85 |
| Daventry | 384 | 418 | 27.32 |
| South Northants | 223 | 254 | 15.30 |

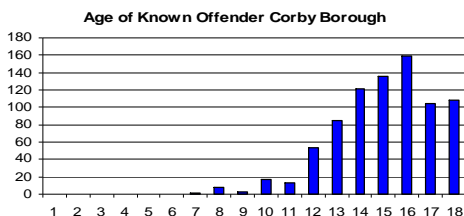
Corby Young Offenders (Northamptonshire Police 2007)

For the purposes of the following data, youth crime has been defined as any crime committed by a person under 19 years of age. Where known, during the 12 month period ending August 2007 720 crimes have been committed by young offenders within Corby CDRP.

| RANK | CRIME TYPE | NO OF CRIMES |
|------|--------------------|--------------|
| 1 | SHOPLIFTING | 112 |
| 2 | ABH/OTHER WOUNDING | 97 |
| 3 | HARASSMENT | 56 |
| 4 | COMMON ASSAULT | 53 |

- 16% of crimes committed by known young offenders were recorded as Shoplifting.
- Corporation Street and Phoenix Parkway were the hotspot streets for known young offenders of crime during this period.

- 28% of crimes committed by known young offenders were in Central beat.
- Where known, 67% of offenders recorded their occupation as student/scholar.
- Where recorded, 72% of offenders were Male and 28% Female.
- 15% of known young offenders resided in Kingswood beat and 14% in Central beat.
- During this period 20% of offenders were aged 16 years and 17% were aged 15 years.



- There is a high repeat offender rate in Corby with 62% of known offenders committing more than 1 crime during this period.

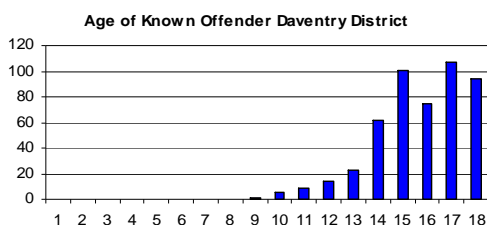
Daventry Young Offenders (Northamptonshire Police 2007)

For the purposes of the following data, youth crime has been defined as any crime committed by a person under 19 years of age. Where known, during the 12 month period ending August 2007 418 crimes have been committed by young offenders within Daventry CDRP.

| RANK | CRIME TYPE | NO OF CRIMES |
|------|--------------------|--------------|
| 1 | ABH/OTHER WOUNDING | 75 |
| 2 | SHOPLIFTING | 37 |
| 3 | COMMON ASSAULT | 30 |

- 18% of crimes committed by known young offenders were recorded as ABH/Other Wounding.
- Tesco Supermarket in Daventry was the hotspot for known young offenders to commit crimes.

- 23% of crimes committed by known young offenders occurred in Daventry South beat.
- Where the offender's occupation was recorded 63% were recorded as student/scholar.
- Where recorded, 87% of offenders were Male and 13% Female.
- 30% of known young offenders resided in Daventry South beat (Southbrook Estate).
- During this period 22% of offenders were aged 17 years and 20% were aged 15 years.



- There is a high repeat offender rate in Daventry with 30% of known young offenders committing 60% of the crime.

East Northamptonshire Young Offenders (Northamptonshire Police 2007)

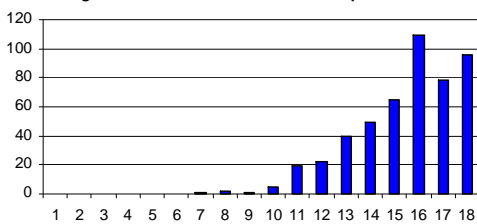
For the purposes of the following data, youth crime has been defined as any crime committed by a person under 19 years of age. Where known, during the 12 month period ending August 2007 424 crimes have been committed by young offenders within East Northamptonshire CDRP.

| RANK | CRIME TYPE | NO OF CRIMES |
|------|-------------------------|--------------|
| 1 | ABH/OTHER WOUNDING | 93 |
| 2 | CRIMINAL DAMAGE TO VEHS | 47 |
| 3 | CRIMINAL DAMAGE OTHER | 43 |
| 4 | HARASSMENT | 31 |
| 5 | SHOPLIFTING | 29 |

- 22% of crimes committed by known young offenders were recorded as ABH/Other Wounding.
- Washbrook Road in Rushden was the hotspot street for known young offenders.
- 20% of crimes committed by known young offenders occurred in Rushden North beat.

- Where known, 56% of offenders recorded their occupation as student/scholar.
- Where recorded, 80% of offenders were Male and 20% Female.
- 22% of known young offenders resided outside Northants, whilst 12% resided in Rushden East beat.

Age of Known Offender East Northamptonshire



- During this period 22% of offenders were aged 16 years and 20% were aged 18 years.

Kettering Young Offenders (Northamptonshire Police 2007)

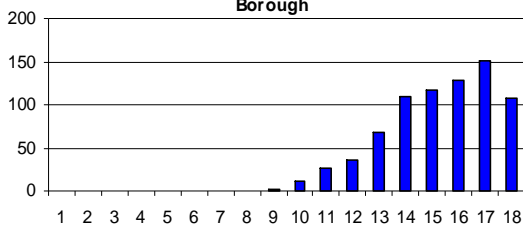
For the purposes of the following data, youth crime has been defined as any crime committed by a person under 19 years of age. Where known, during the 12 month period ending August 2007 657 crimes have been committed by young offenders within Kettering CDRP.

| RANK | CRIME TYPE | NO OF CRIMES |
|------|--------------------------|--------------|
| 1 | SHOPLIFTING | 148 |
| 2 | ABH/OTHER WOUNDING | 89 |
| 3 | CRIMINAL DAMAGE TO VEHS | 48 |
| 4 | COMMON ASSAULT | 34 |
| 5 | CRIM DAMAGE TO DWELLINGS | 31 |

- 22% of crimes committed by known young offenders were recorded as ABH/Other Wounding.
- Gold Street in Kettering was the hotspot street for known young offenders.

- 34% of crimes committed by known young offenders occurred in St Mary's beat.
- Where known, 61% of offenders recorded their occupation as student/scholar.
- Where recorded, 78% of offenders were Male and 22% Female.
- 10% of known young offenders resided in Avondale beat and 9% in Warkton beat.

Age of Known Young Offenders Kettering Borough



- During this period 20% of offenders were aged 17 years in Kettering Borough

Northampton Young Offenders (Northamptonshire Police 2007)

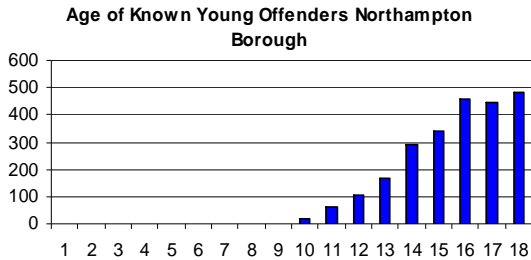
For the purposes of the following data, youth crime has been defined as any crime committed by a person under 19 years of age. Where known, during the 12 month period ending August 2007 2034 crimes have been committed by young offenders within Northampton CDRP.

| RANK | CRIME TYPE | NO OF CRIMES |
|------|------------------------|--------------|
| 1 | SHOPLIFTING | 215 |
| 2 | ABH/OTHER WOUNDING | 203 |
| 3 | HARASSMENT | 155 |
| 4 | THEFT OF MOTOR VEHICLE | 124 |
| 5 | COMMON ASSAULT | 117 |

- 12% of crimes committed by known young offenders were recorded as Shoplifting.
- Abington Street and The Weston Favell Centre were the main hotspot streets for known young offenders.
- 16% of crimes committed by known young

offenders occurred in Castle beat.

- Where known, 56% of offenders recorded their occupation as student/scholar.
- Where recorded, 80% of offenders were Male and 20% Female.
- 11% of known young offenders resided in Spencer Beat (Briar Hill Estate) and 9% in Eastfield beat.



- During this period 20% of offenders were aged 18 years and 19% were aged 16 years

South Northamptonshire Young Offenders (Northamptonshire Police 2007)

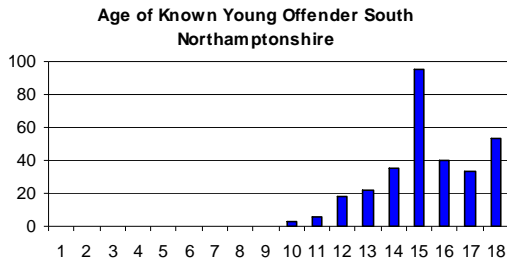
For the purposes of the following data, youth crime has been defined as any crime committed by a person under 19 years of age. Where known, during the 12 month period ending August 2007 254 crimes have been committed by young offenders within South Northamptonshire CDRP.

| RANK | CRIME TYPE | NO OF CRIMES |
|------|-----------------------|--------------|
| 1 | ABH/OTHER WOUNDING | 57 |
| 2 | THEFT FROM VEHICLE | 21 |
| 3 | BURGLARY NOT DWELLING | 20 |

- 22% of crimes committed by known young offenders were recorded as ABH/Other Wounding.
- Stratford Road outside Deanshanger School was the main hotspot for known young

offenders committing crimes in South Northamptonshire.

- 27% of crimes committed by known young offenders occurred in Brackley beat.
- Where known, 76% of offender's recorded their occupation as student/scholar.
- Where recorded, 87% of offenders were Male and 13% Female.
- 29% of known young offenders resided in Brackley beat.



- During this period 31% of offenders were aged 15 years in South Northamptonshire.

Wellingborough Young Offenders (Northamptonshire Police 2007)

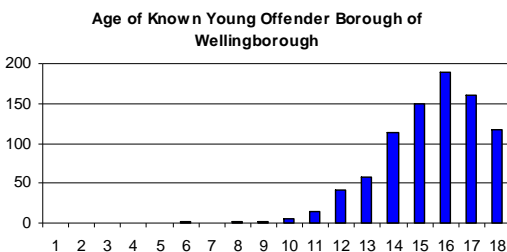
For the purposes of the following data, youth crime has been defined as any crime committed by a person under 19 years of age. Where known, during the 12 month period ending August 2007 739 crimes have been committed by young offenders within Wellingborough CDRP.

| RANK | CRIME TYPE | NO OF CRIMES |
|------|-----------------------|--------------|
| 1 | SHOPLIFTING | 111 |
| 2 | ABH/OTHER WOUNDING | 92 |
| 3 | HARASSMENT | 59 |
| 4 | THEFT FROM VEHICLE | 45 |
| 5 | BURGLARY NOT DWELLING | 44 |

- 15% of crimes committed by known young offenders were recorded as ABH/Other Wounding.
- Corn Lane and Oxford Street were the main hotspot streets for known young offenders.
- 33% of crimes committed by known young offenders

occurred in Swanspool beat.

- Where known, 48% of offenders recorded their occupation as student/scholar.
- Where recorded, 80% of offenders were Male and 20% Female.
- 14% of known young offenders resided in Croylant beat.



- During this period 22% of offenders were aged 16 years in the Borough of Wellingborough.

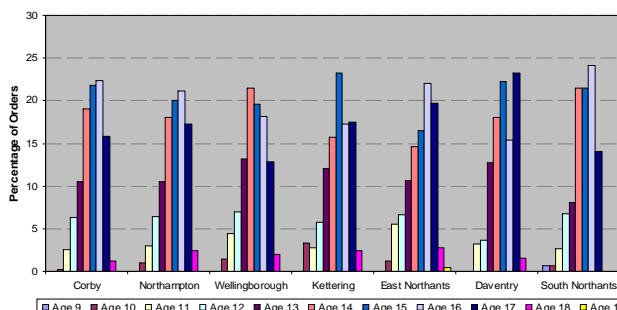
Anti-Social Behaviour

The following data is taken from Northamptonshire Police's CDRP Analysis (Northamptonshire Police 2007). The principal aim of the youth justice system is to prevent offending by children and young people aged 10 to 17 years. The main vehicle to deliver this aim is through Youth Offending Teams (YOTs) that work at a local level. Every local authority in England and Wales has a YOT. The YOT is made up of representatives from the Police, Probation Service, Social Services, health, education, drugs and alcohol misuse, and housing officers.

Through a national assessment, the YOT identifies the needs of each young offender and the risk they pose to others. The YOT implement an individualised programme to address the needs of the young person and prevent them from reoffending.

| | Rate of Orders (per 1000 population) | Percentage of population aged 0-17 (NPPM) | Percentage entering Criminal Justice System |
|-----------------|--------------------------------------|---|---|
| Corby | 41 per 1000 | 14.3% | 0.78% |
| Northampton | 33 per 1000 | 13.1% | 0.59% |
| Wellingborough | 29 per 1000 | 13.0% | 0.6% |
| Kettering | 24 per 1000 | 12.8% | 0.38% |
| East Northants | 18 per 1000 | 14.0% | 0.28% |
| Daventry | 16 per 1000 | 13.7% | 0.18% |
| South Northants | 12 per 1000 | 12.9% | 0.12% |

Northamptonshire YOT issued 401 orders to 312 young people between April 2006 and March 2007. 60 young people received more than one order in the reporting period. Table 2.18 shows the rates of orders in each district. It also shows the percentage of the population aged 0-17 years old in each district. The final column details the percentage of 0-17 year olds in each district who entered the criminal justice system.



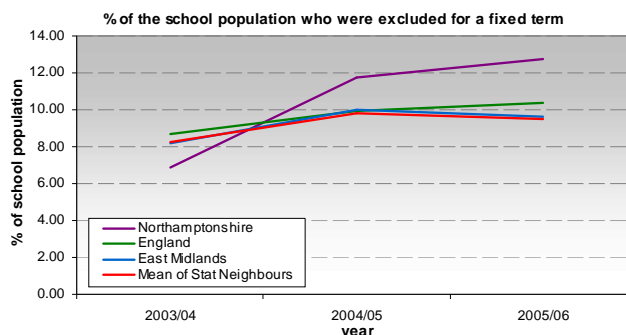
The adjacent graph shows the percentage of orders by age in each district.

Exclusions from School

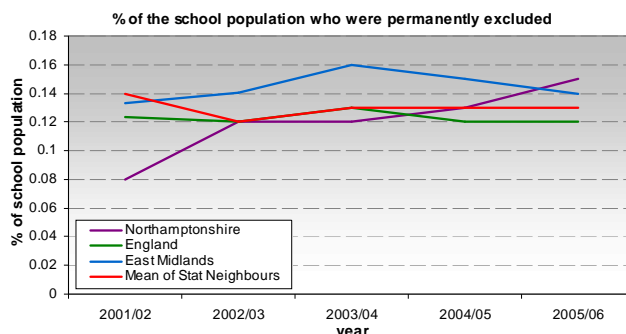
School exclusions are problematic for the government in two ways. Firstly, in terms of fiscal policy, they affect human capital as an undereducated workforce is less productive. Secondly, exclusion is connected to human rights issues as pupils have the right to an education and, simultaneously, “the right to participate in social life” (Macrae et al. 2003; Blyth and Milner 1993).

School exclusions can refer to a process whereby a Head-teacher suspends a pupil from a school for a fixed number of days or expels a pupil permanently. From September 2006, the school or the LA of the excluded pupil must provide provision from the 6th day of the exclusion. Northamptonshire provides support to schools to try and prevent exclusions through the support team BACIN, and through a number of behaviour and attendance consultations.

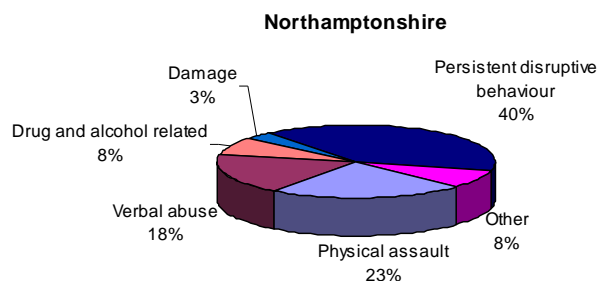
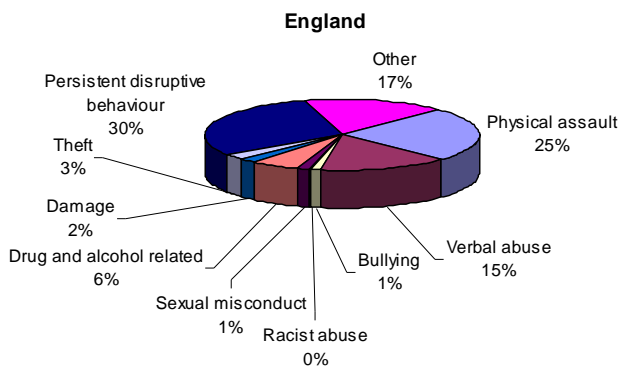
The following two graphs (DCSF 2007) show the trends of fixed and permanent exclusion for England, Northamptonshire and its statistical neighbours. The first graph on the right shows the percentage of fixed term exclusions by area. It shows that in 2003/04 Northamptonshire had the lowest percentage of pupils experiencing a fixed term exclusion (7%) compared to the average for the Nation and its statistical neighbours. However in 2004/05 the percentage of pupils experiencing a fixed term exclusion in Northamptonshire rose to 12% which is almost 2% higher than the average for the nation and its statistical neighbours. In 2005/06 the percentage of pupils experiencing a fixed term exclusion in Northamptonshire remained over 2% higher than the average for the nation and its statistical neighbours.



The second graph indicates the percentage of pupils receiving a permanent exclusion by area. It shows that since 2001/02 the percentage of pupils receiving a permanent exclusion rose from 0.08% in 2005/06. In 2001/02 the percentage of permanent exclusions in Northamptonshire was less than the average of its statistical neighbours and the nation. However, in 2005/06 in Northamptonshire the percentage of pupils receiving a permanent exclusion was greater than both the averages for the nation and its statistical neighbours.



The two pie charts below show the reasons why pupils were permanently excluded from schools in Northamptonshire and nationally (DCSF 2007). The most prominent reason for pupils to be excluded from schools in England (30%) and Northamptonshire (40%) was persistent disruptive behaviour.



Research has suggested that the number of pupil exclusions has dramatically increased (Parsons 1999). However, in the 2006/2007 school year, the number of permanent exclusions from schools in Northamptonshire was lower than it had been in the previous five years (CYPS 2007). The table to the right shows the three year trends of the number of permanent exclusions from schools in Northamptonshire. The number of exclusions for each school year is presented by school type, ethnicity, gender and whether the excluded pupil has a statement. The bracketed percentages in the table indicate the proportion of the total number of permanent exclusions in that year.

| | 2004-2005 | 2005-2006 | 2006-2007 |
|-------------------------|--------------|--------------|-------------|
| Secondary Schools | 114 | 157 | 106 |
| Primary Schools | 18 | 11 | 10 |
| Special Schools | 6 | 8 | 6 |
| Total: | 138 | 176 | 122 |
| From an ethnic minority | 20 (14.49%) | 10 (5.68%) | 14 (11.48%) |
| With an SEN statement | 25 (18.12%) | 38 (21.59%) | 23 (18.85%) |
| Females | 26 (18.84%) | 42 (23.86%) | 24 (19.67%) |
| Males | 112 (81.16%) | 134 (76.14%) | 98 (80.33%) |

Of the 122 permanently excluded pupils in 2006/2007, 18 were admitted to other schools, 1 left the county and 103 were referred for a place in a Pupil Referral Unit. Also, 3 of the 122 permanently excluded pupils were looked after by the local authority.

The table below (CYPS 2007) breaks down the number of permanent exclusions by area of residence. The proportion of exclusions for each area is provided in brackets in the table. The table shows that the number of pupils permanently excluded from schools in Wellingborough/ East Northants area has decreased year upon year. All areas witnessed a decrease in the number of exclusions in the 2006/2007 school year compared to the previous year.

| | 2004-2005 | 2005-2006 | 2006-2007 |
|--------------------------------|----------------------|----------------------|----------------------|
| Northampton Area | 60 (43.48%) | 87 (49.43%) | 56 (45.90%) |
| Kettering/ Corby Area | 30 (21.74%) | 41 (23.30%) | 32 (26.23%) |
| Wellingborough/ East Northants | 37 (26.81%) | 31 (17.61%) | 24 (19.67%) |
| Daventry/ South Northants | 11 (7.97%) | 17 (9.66%) | 10 (8.20%) |
| Total: | 138 (100.00%) | 176 (100.00%) | 122 (100.00%) |

- Over 50% of permanent exclusions in Northampton area were from Northampton Academy (20) and Weston Favell (11).
- In the Corby/Kettering area, 6 exclusions were from The Kingswood and 6 exclusions were from Lodge Park. No other school in this area excluded more than 4 pupils.
- In Wellingborough/ East Northants area, Weavers excluded 5 pupils, In Daventry/ South Northants area, Roade excluded the most pupils permanently

The final table below shows the number of days lost to fixed term exclusion and the percentage of pupils receiving a fixed term exclusion for each secondary school in Northamptonshire (CYPS 2007).

| SCHOOL | District | 2006 No. on Roll | Fixed Incidents | No. of Pupils | No. of Days Lost | % of Pupils Receiving an Exclusion |
|--|----------|------------------|-----------------|---------------|------------------|------------------------------------|
| Bishop Stopford School | C/K | 1079 | 31 | 20 | 130 | 1.85 |
| Campion School | D/SN | 1211 | 80 | 58 | 158 | 4.78 |
| Caroline Chisholm School | D/SN | 2006 | 0 | 0 | 0 | 0 |
| Chenderit School | D/ SN | 869 | 41 | 33 | 76 | 3.79 |
| Corby Community College | C/K | 861 | 290 | 132 | 548.5 | 15.33 |
| Danetre Specialist College | D/ SN | 1083 | 62 | 47 | 147 | 4.33 |
| Daventry William Parker School | D/ SN | 1027 | 175 | 97 | 289 | 9.44 |
| Guilsborough School & Specialist College | D/SN | 1113 | 79 | 38 | 142 | 3.41 |
| Huxlow Science College | W/EN | 727 | 57 | 40 | 97 | 5.50 |
| Ise Community College | C/K | 921 | 73 | 43 | 315 | 4.66 |
| Kingsbrook School | D/SN | 812 | 62 | 39 | 269 | 4.80 |
| Kingsthorpe Community College | N | 1211 | 243 | 113 | 613.5 | 9.33 |
| Latimer Community Arts College | C/K | 1010 | 78 | 42 | 204.5 | 4.15 |
| Lodge Park Technology College | C/K | 1104 | 62 | 21 | 342 | 1.90 |
| Magdalen College School | D/SN | 1170 | 109 | 54 | 295 | 4.61 |
| Manor School & Sports College | W/EN | 723 | 46 | 31 | 156 | 3.19 |
| Mereway Community College | N | 1064 | 83 | 55 | 352 | 5.16 |
| Montagu School | C/K | 958 | 232 | 115 | 655.5 | 12.00 |
| Montsaye Community College | C/K | 1086 | 161 | 70 | 431.5 | 6.44 |
| Moulton School | D/SN | 1100 | 72 | 53 | 218 | 4.81 |
| Northampton Academy | N | 1187 | 344 | 174 | 1643.5 | 14.65 |
| Northampton School for Boys | N | 1095 | 20 | 16 | 51 | 1.46 |
| Northampton School for Girls | N | 1389 | 66 | 40 | 178 | 2.87 |
| Oundle & Kings Cliffe School | W/EN | 685 | 23 | 13 | 39.5 | 1.89 |
| Prince William School | W/EN | 831 | 40 | 30 | 148 | 3.61 |
| Roads School & Sports College | D/SN | 1089 | 239 | 91 | 429.5 | 8.35 |
| Sir Christopher Hatton School | W/EN | 1026 | 114 | 62 | 490 | 6.04 |
| Southfield School for Girls | C/K | 810 | 48 | 28 | 74 | 3.45 |
| Sponne School Technology College | D/SN | 1000 | 107 | 61 | 239 | 6.10 |
| The Duston School | N | 971 | 445 | 161 | 1654 | 16.58 |
| The Ferrers Specialist Arts College | W/EN | 924 | 117 | 66 | 388 | 7.14 |
| The King John School | W/EN | 463 | 20 | 8 | 32 | 1.72 |
| The Kingswood School | C/K | 1123 | 127 | 70 | 558 | 6.23 |
| The Rushden Community College | W/EN | 938 | 227 | 101 | 864.5 | 10.76 |
| Thomas Becket Catholic School | N | 936 | 208 | 79 | 499 | 8.44 |
| Unity College | N | 1187 | 217 | 109 | 511 | 9.18 |
| Weavers School | W/EN | 894 | 372 | 140 | 1058.5 | 15.65 |
| Weston Favell School | N | 1203 | 323 | 188 | 1272 | 15.62 |
| Wollaston School | W/EN | 1185 | 105 | 68 | 388 | 5.23 |
| Wrenn School | W/EN | 1239 | 69 | 45 | 337 | 3.63 |
| TOTALS COUNTY | | 40310 | 5267 | 2651 | 16294 | 6.57 |

Develop self confidence and successfully deal with significant life changes and challenges

Children of Offenders (DCSF 2007)

Having a parent imprisoned is likely to have negative affects on a child's physical, emotional and social wellbeing, resulting in them being some of the most vulnerable in society. They are at risk of a number of poorer outcomes, including:

| | |
|-------------------------------------|---|
| Be Healthy | ➤ Children of prisoners have about three times the risk of mental health problems compared to their peers. |
| Stay Safe | ➤ Parental imprisonment can lead children to experience stigma, bullying and teasing. ➤ Children's caregivers often experience considerable distress during parental imprisonment, and children are often subject to unstable care arrangements. |
| Enjoy and Achieve | ➤ Children of prisoners also experience higher levels of social disadvantage than their peers. |
| Make A Positive Contribution | ➤ Children of prisoners have three times the risk of anti-social/delinquent behaviour compared to their peers. |
| Achieve Economic Well-being | ➤ Imprisonment has a negative financial impact on families, leaving families vulnerable to financial instability, poverty and debt and potential housing disruption. ➤ 72% of prisoners were in receipt of benefits before coming into prison. |
| Crime Reduction | ➤ 65% of boys with a convicted parent, go on to offend. |

While there is a strong correlation between poorer outcomes and parental imprisonment, it is not proven that parental imprisonment causes poorer outcomes. It is estimated that that there are 160,000 children with a parent, this represents approximately 1.5% of all children. To put this in perspective, this is around two and half times the number of children in care. Applying the 1.5% prevalence of children whose parents are offenders to Northamptonshire's children's population suggests that there are approximately 2,500 children aged 0-19 in Northamptonshire whose parent maybe imprisoned.

There are a number of other characteristics about children of offenders, including:

- 7% of children will see a parent imprisoned during their school years.
- 25% of men in Young Offender Institutes are, or are shortly to become, fathers.

- More than 60% of women prisoners are mothers and 45% had children living with them at the time of imprisonment.
- Given the over-representation of black and minority ethnic groups in prisons, it would be logical to assume that this translates to the children of prisoners group.
- Around 55% of female prisoners have a child younger than 16 and 33% a child under 5.
- Based on projected prison population growth, this group could rise to around 200,000 within the next five years.

Lone Parents (DWP 2007)

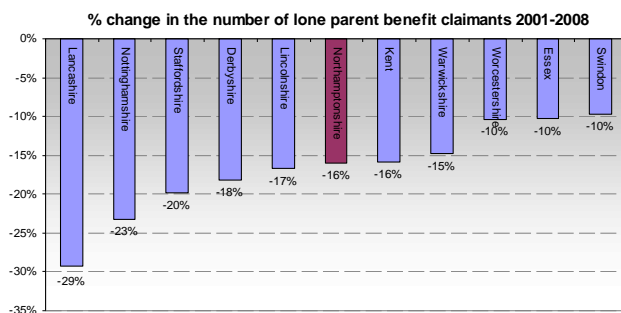
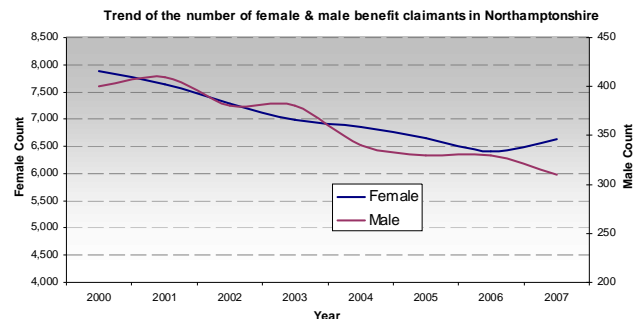
Research shows that children who experience parental separation or parental divorce are roughly twice as likely to experience poor outcomes in the long term, compared with an intact family (Rogers et al. 1998: 13). In 2000, the Family Matters Institute conducted a survey of 80,000 adults to research the effects of family breakdown. The results of the research indicated that parental divorce has adverse effects on children's lives. Furthermore, children from broken homes exhibit greater health, emotional and behavioural needs; they are more frequently involved in drug abuse and crime; they have a higher suicide rate; they are more likely to perform badly at school and are less likely to participate in further education; they are more likely to become young offenders; and, they are twice as likely to suffer divorce or relationship breakdown in adult life (Family Matters Institute 2000)

The Office of National Statistics report that there has been a large growth in the proportion of lone parent families in Great Britain, from 8 per cent of families in 1971 to over a quarter of families (27 per cent) in 2002. In Northamptonshire, there are 84,675 families claiming child benefit and 6,960 lone parent benefit claimants. This suggests that 8.22% of families in Northamptonshire are claiming lone parent benefits.

| | Lone parent families | Lone parent families: 1 dependent child | Lone parent families: 2 dependent children | Lone parent families: 3 or more dependent children |
|------------------|----------------------|---|--|--|
| Northampton | 11.23% | 5.05% | 3.51% | 2.68% |
| Corby | 10.40% | 4.94% | 3.51% | 1.95% |
| Wellingborough | 10.39% | 4.56% | 3.39% | 2.44% |
| Northamptonshire | 8.22% | 3.76% | 2.63% | 1.81% |
| East Northants | 6.86% | 3.19% | 2.22% | 1.45% |
| Kettering | 6.81% | 3.36% | 2.04% | 1.42% |
| Daventry | 5.54% | 2.57% | 1.95% | 1.03% |
| South Northants | 2.69% | 1.21% | 0.93% | 0.56% |

The adjacent table shows the proportion of families claiming lone parent benefits by the number of dependent children they have, for Northamptonshire and each of its districts. Northampton district has the highest proportion of families claiming lone parent benefits (11.23%) and South Northants has the lowest percentage of lone parent families (2.69%)

The graph to the right shows the trend of the number of lone parent benefit claimants in Northamptonshire by gender. It shows that over the last 7 years the number of male and female lone parent benefit claimants in Northampton has fallen. However, the number of females claiming lone parent benefits increased from 6,410 in 2006 to 6,640 in 2007.



The graph to the left shows the percentage change in the number of lone parent benefit claimants between 2001 and 2008. Data is provided for Northamptonshire and each of its ten statistical neighbours. It shows that, since 2001, Northamptonshire has witnessed a 16% reduction in the number of lone parent benefit claimants. Compared to its statistical neighbours, Northamptonshire's percentage loss of lone parent benefit claimants is less than 5 of its neighbours and greater than 5.

Engage in decision making and support the community and environment

School council awards (kite mark SAIG)

The Active Young Citizen Awards are an important new way for a student council to gain accreditation and recognition for its achievements, as well as providing a valuable tool for self-evaluation and a clear structure for improving the effectiveness of School Councils. The award has been designed in collaboration with the East Midlands Citizenship consortia and reinforces the Every Child Matters outcomes.

It allows schools or colleges to assess the quality of its Council by carrying out an assessment of its activity in several defined areas that refer to the Children and Young People's Charter. Bronze, Silver, Gold and Platinum awards are attainable. For a School or College to achieve a Silver award its progress must be externally

assessed and a brief meeting with a representative group of pupils needs to be held to discuss their School Council experiences.

The adjacent table shows the number and percentage of schools achieving various levels of school council awards. It shows that the proportion of Primary Schools with a

School Council award is highest in Corby (32%), followed by Northampton (29%). In terms of the proportion of Secondary Schools with awards, East Northamptonshire has the highest (45%) and Kettering has the lowest (0%), followed by Northampton (11%).

| | | Bronze | Silver | Gold | No Award | Total | %age of schools with an award |
|---------------------------------|-----------|--------|--------|------|----------|-------|-------------------------------|
| Northampton | Primary | 12 | 4 | | 40 | 56 | 29% |
| | Secondary | 1 | | | 8 | 9 | 11% |
| Daventry & South Northants | Primary | 16 | 1 | | 90 | 107 | 16% |
| | Secondary | 2 | 1 | | 9 | 12 | 25% |
| Wellingborough & East Northants | Primary | 7 | 6 | 1 | 56 | 70 | 20% |
| | Secondary | 4 | 1 | | 6 | 11 | 45% |
| Kettering | Primary | 3 | 2 | | 35 | 40 | 13% |
| | Secondary | | | | 6 | 6 | 0% |
| Corby | Primary | 7 | 1 | | 17 | 25 | 32% |
| | Secondary | 2 | | | 3 | 5 | 40% |