

## Northamptonshire County Council - 2017-18 Budget Information

### 1.0 How Northamptonshire County Council is funded.

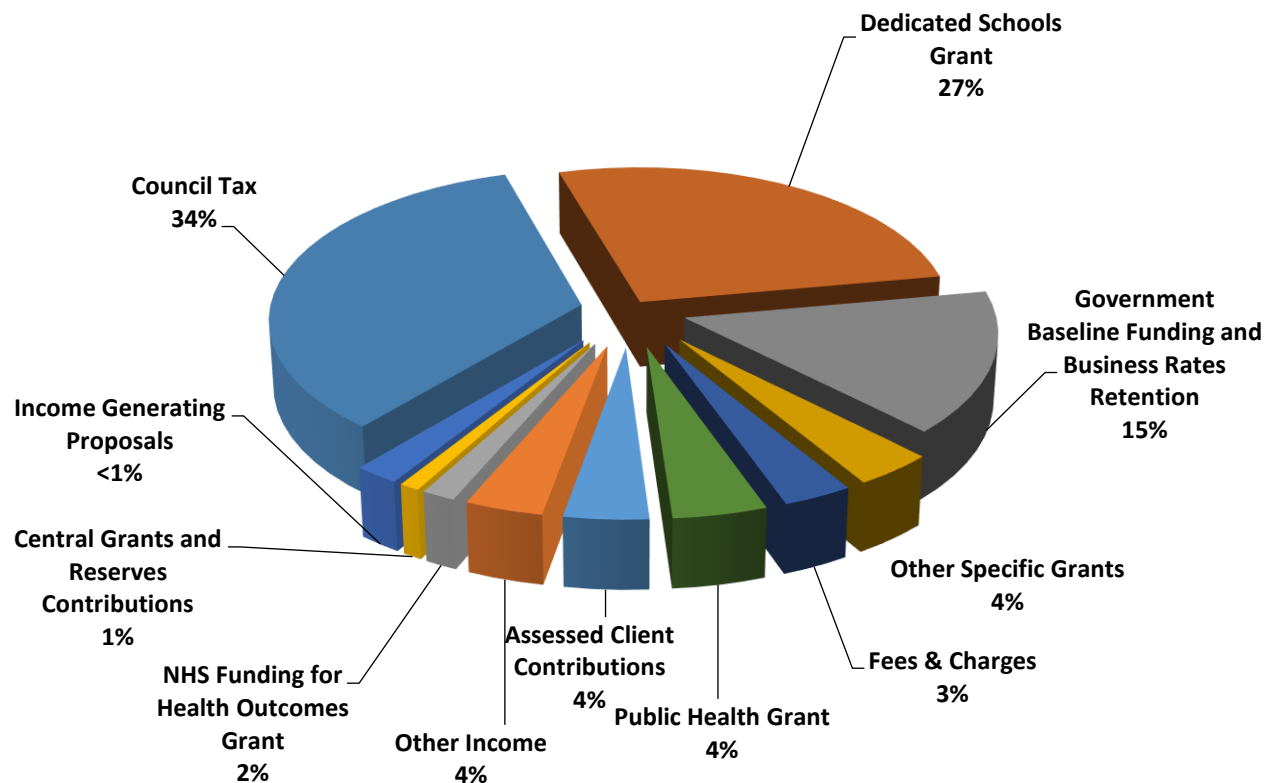
1.1. The Council approved the 2017-18 budget at Full Council on the 23<sup>rd</sup> February 2017. Within the 2017-18 budget the Council's budgeted gross expenditure for 2017-18 is £813.2m.

This is funded by the following income streams;

- Service related income such as specific grants and service generated income totalling £396.4m, this includes income such as the Public Health Grant, Fees and Charges and Adult Social Care contributions.
- Central Government Grants, Business Rates and Council Tax Income which funds the net budget balance of £416.8m.

The charts below provides a breakdown of how the Council is funded in 2017-18;

### NCC funding split by type of income (%)



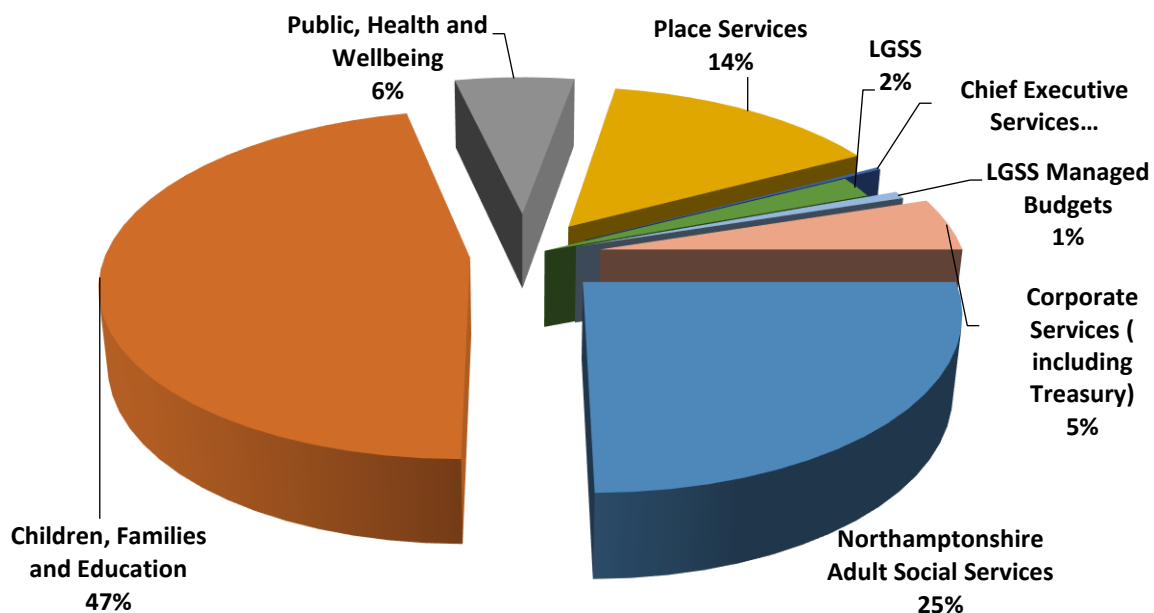
## NCC funding split by type of income (£m)

Type of Funding	£m
Council Tax	273
Dedicated Schools Grant	217
Government Baseline Funding and Business Rates Retention	125
Other Specific Grants	30
Fees & Charges	26
Public Health Grant	36
Assessed Client Contributions	32
Other Income	30
NHS Funding for Health Outcomes Grant	13
Central Grants and Reserves Contributions	8
Council Tax Surplus	6
Income from Capitalisation of Transformation Programme	17
<b>Total Gross Expenditure</b>	<b>813</b>

2.0 The total gross expenditure is £813.2m and a breakdown of spend by Directorate is provided below;

Directorate	Base £m	Service Pressures £m	Savings £m	Gross Budget £m	Income £m	Net Budget £m
<b>People</b>						
Adults Social Care	194.3	33.9	(25.2)	203.0	(49.8)	153.2
Children, Families and Education	147.2	26.8	(16.3)	157.7	(24.2)	133.5
Public Health and Wellbeing	53.5	0.1	(2.6)	51.0	(45.8)	5.3
<b>Total People Services</b>	<b>395.0</b>	<b>60.8</b>	<b>(44.1)</b>	<b>411.7</b>	<b>(119.8)</b>	<b>292.0</b>
<b>Place Services</b>	125.6	1.7	(9.8)	117.5	(36.4)	81.1
<b>NCC Group - CE Services</b>	67.3	0.4	(3.9)	63.8	(19.9)	43.8
<b>Total Service Budget</b>	<b>587.9</b>	<b>62.9</b>	<b>(57.8)</b>	<b>593.0</b>	<b>(176.1)</b>	<b>416.8</b>
Dedicated Schools Grant and Other Schools Income	220.2	0.0	0.0	220.2	(220.2)	0.0
<b>Overall Total</b>	<b>808.1</b>	<b>62.9</b>	<b>(57.8)</b>	<b>813.2</b>	<b>(396.4)</b>	<b>416.8</b>

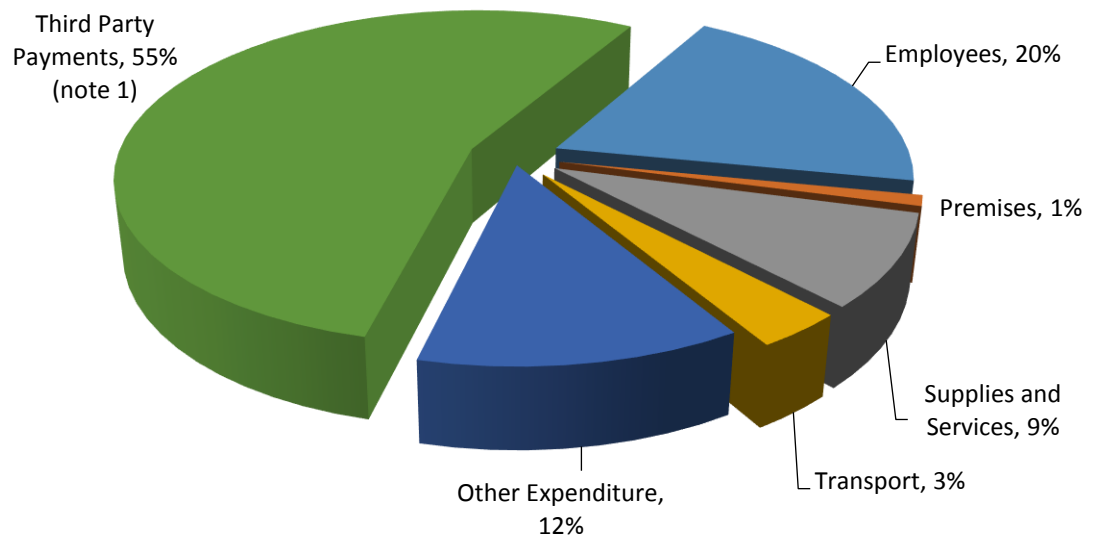
3.0 The chart below provides a further breakdown of NCC Group Services including LGSS expenditure.



Directorate	£m
Northamptonshire Adult Social Services	203
Children, Families and Education	378
Public, Health and Wellbeing	51
Place Services	118
Chief Executive Services	2
LGSS	16
LGSS Managed Budgets	6
Corporate Services ( including Treasury)	40
<b>Total Gross Expenditure</b>	<b>813</b>

#### 4.0 Spending by Type of Expenditure

The chart detailed below provides gross expenditure by type of expenditure.



**Note 1** : Third party payment include Social Care budgets for both Adults and Children's Services.