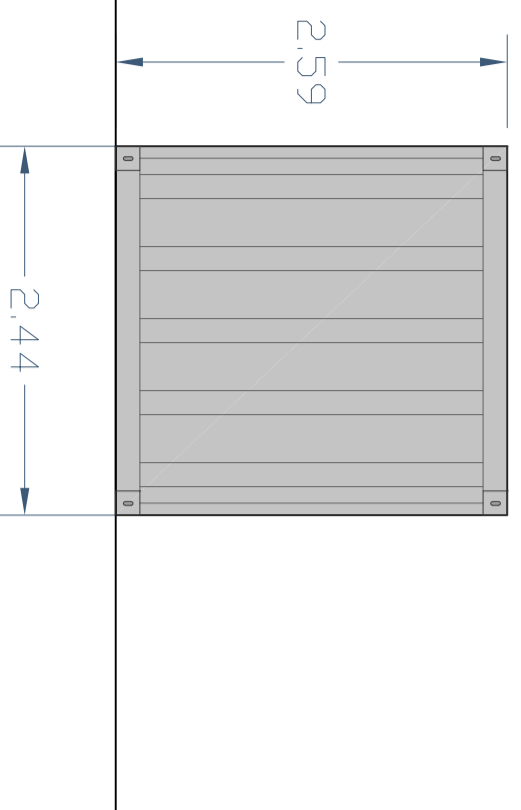


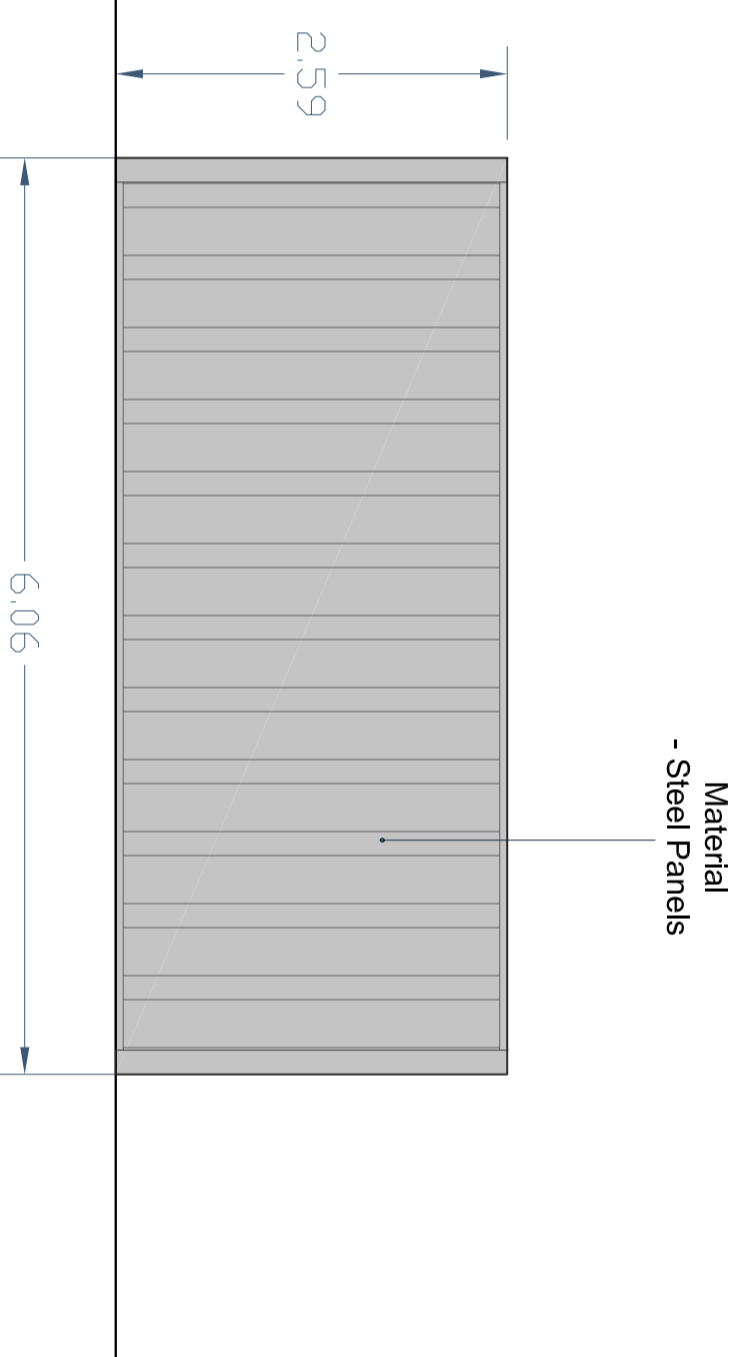
Elevations of Site Office

All dimensions to be verified on site. Plotted dimensions to show proceed to show scale. Any areas indicated on this drawing are for guidance only, no responsibility is taken for their accuracy.
 This drawing is the property of GPP Planning Limited. Copyright is reserved by them and the drawing is issued on the condition that it is not copied, reproduced, stored in a retrieval system, or transmitted in any form or by any means, electronic, mechanical, photocopying, recording, or by any information storage or retrieval system, without the prior written permission of GPP Planning.
 © 2021 GPP Planning Limited. All rights reserved.

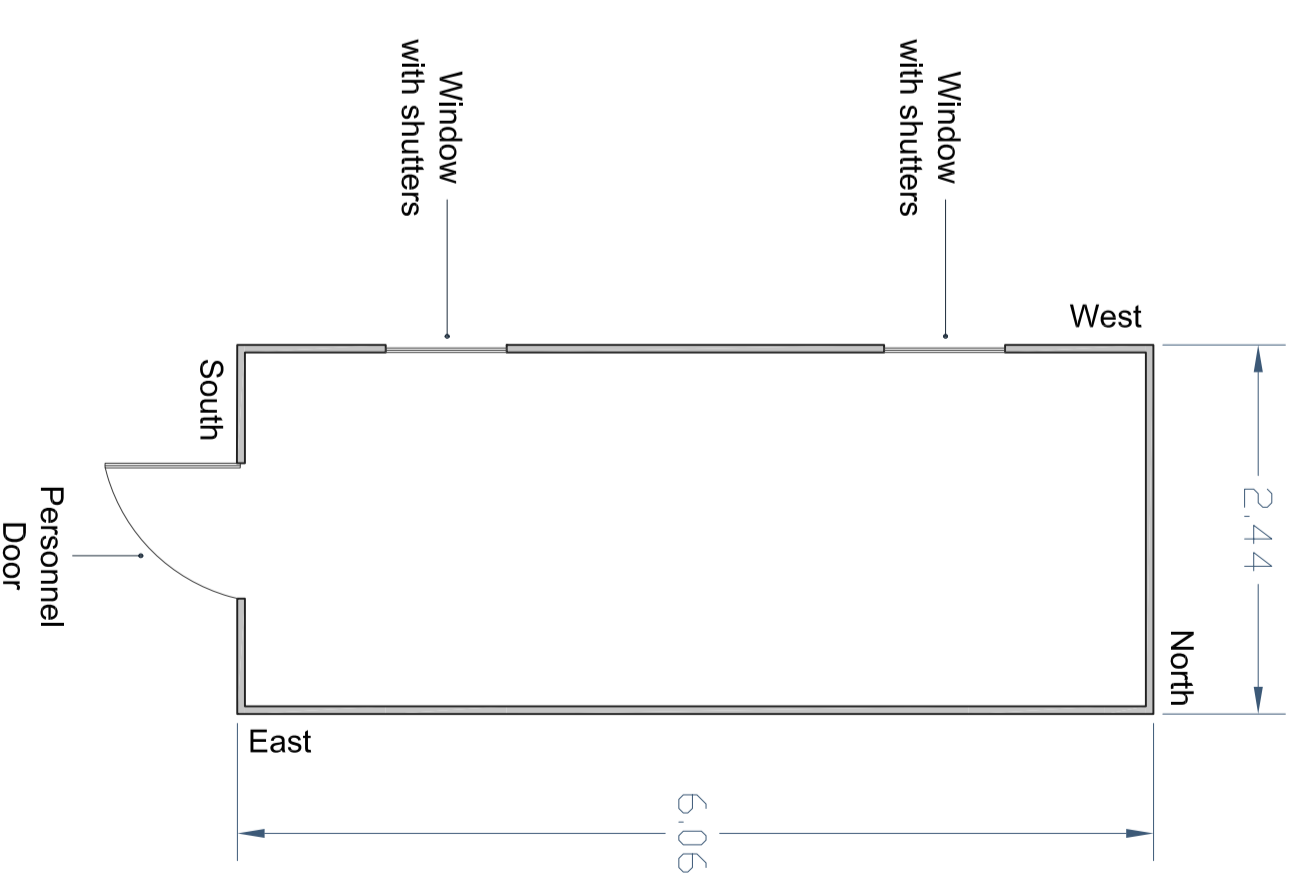
North Elevation



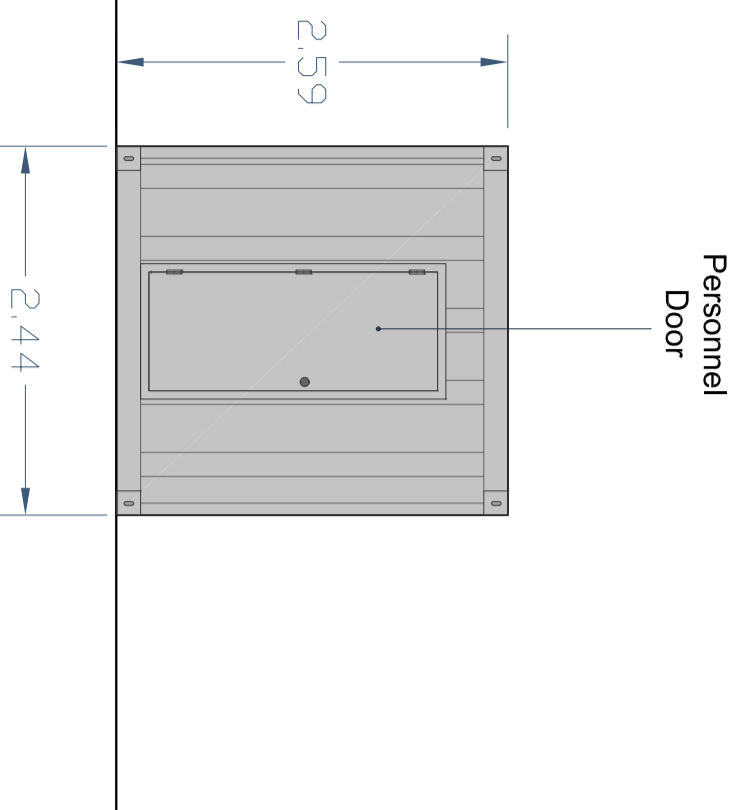
East Elevation



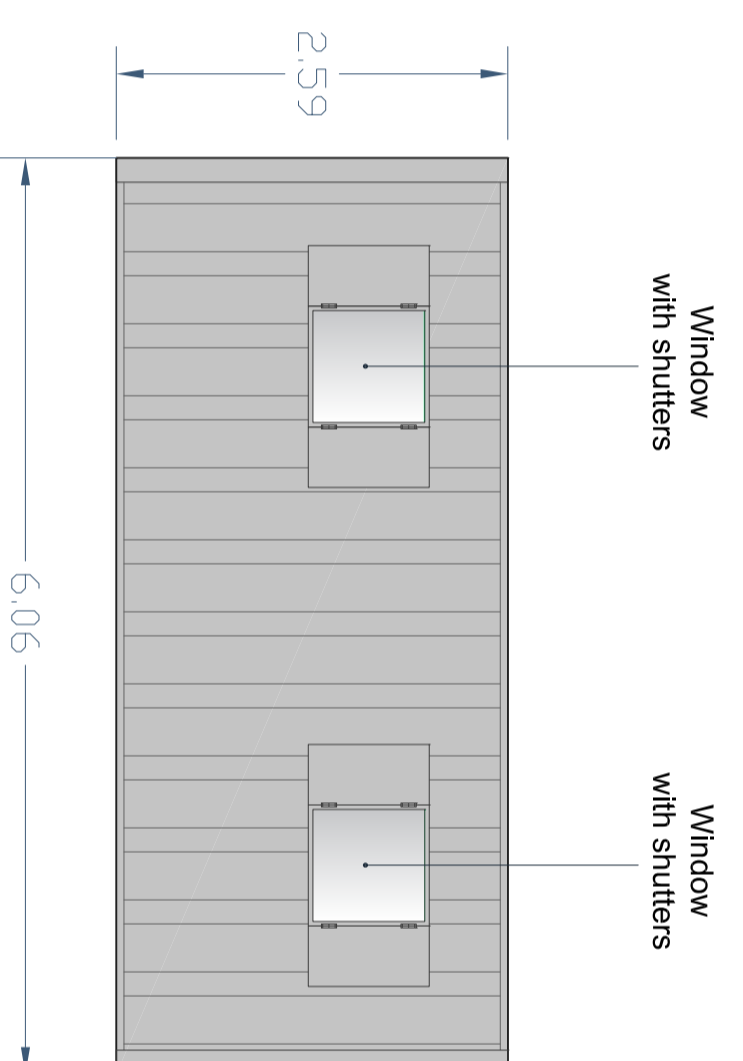
Floor Plan



South Elevation



West Elevation



Rev	Description	Issued	Date
2	Elevations and text updated to reflect change of location.	KD	30/06/21

GPP
 CONSULTANTS

Planning Consultants

1: 01604 771123 E: info@gppplanning.co.uk W: www.gppplanning.co.uk
 10th Floor, 100 Broad Street, Birmingham, B15 1RN
 10th Floor, 100 Broad Street, Birmingham, B15 1RN
 Registered in England No. 6019866

TITLE:	Green Waste Processing at Woodford Road, Woodwell, Woodford, Kettering, Northants Elevations of Site Office		
CLIENT:	STONETREE RECYCLING		
DRAWN BY:	KD	CHECKED BY:	MD
DRAWING NO.:	GPP/RSR/WZ/104	REV NO.:	2
SCALE:	1:50 at A2	DATE:	04 Jun 2021
SCALE BAR:			