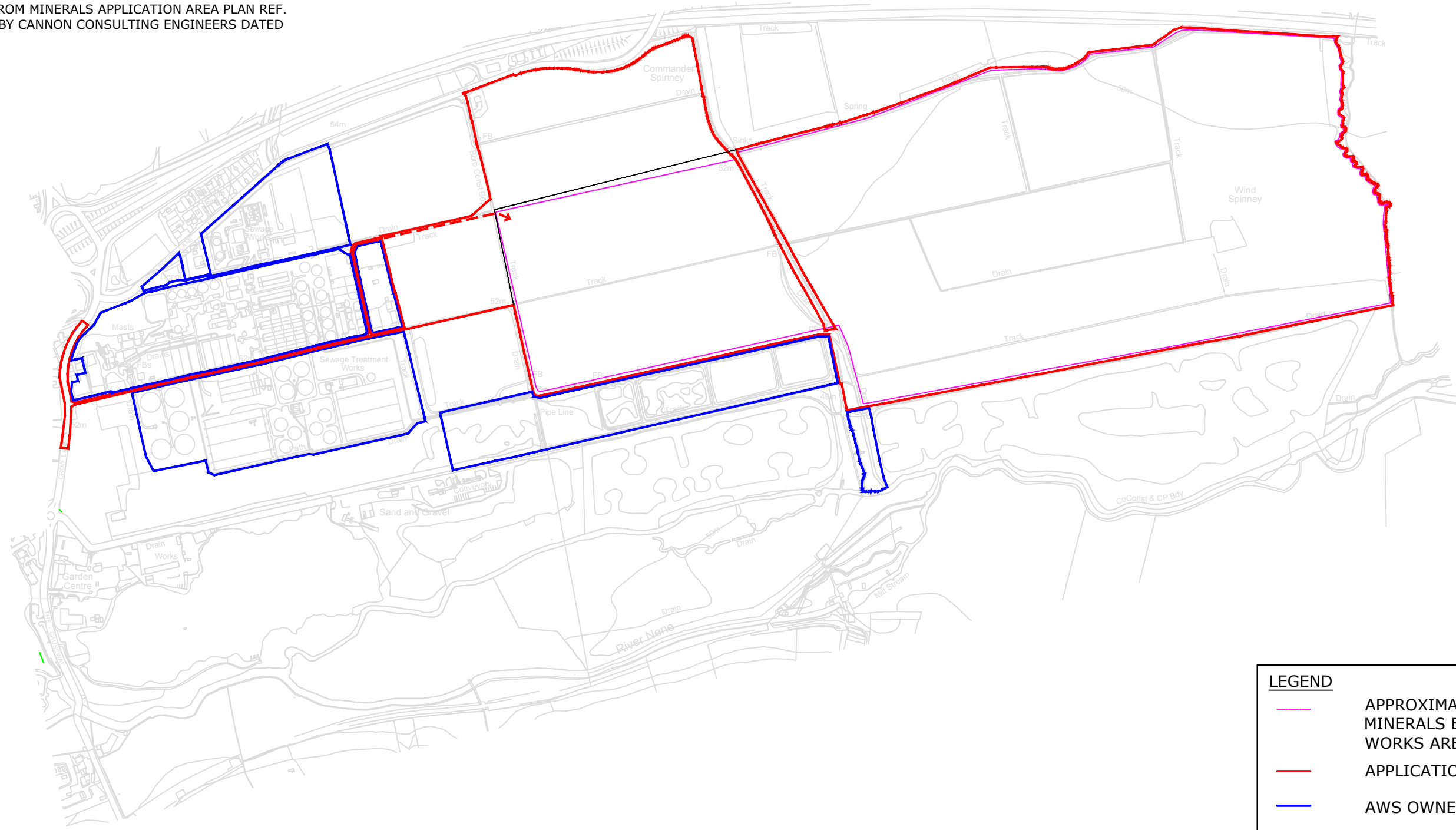





NOTES

1. THIS DRAWING IS TO BE READ IN CONJUNCTION WITH ALL RELEVANT ENGINEER'S, ARCHITECT'S AND SPECIALIST'S DRAWINGS AND THE SPECIFICATION.

2. **DO NOT SCALE** FROM THIS DRAWING MANUALLY OR ELECTRONICALLY. WRITTEN PERMISSION MUST BE OBTAINED FROM MLM PRIOR TO SCALING ELECTRONICALLY OR USING THIS ELECTRONIC FILE.

3. BASE PLAN TAKEN FROM MINERALS APPLICATION AREA PLAN REF. F191-033-REVISION B BY CANNON CONSULTING ENGINEERS DATED 13.07.2017.



LEGEND	
	APPROXIMATE EXTENT OF MINERALS EXTRACTION WORKS AREA
	APPLICATION AREA
	AWS OWNERSHIP AREA

Rev	Date	Description	Made	Ckd
B	19.02.18	MLM UPDATES	AC	AC
A	14.07.17	CLIENT DETAILS	AT	AC



Building 7200,
Cambridge Research Park,
Cambridge, CB25 9TL
Tel: 01223 632800
Website: www.mlmgroupp.com

Drawing Status	FINAL ISSUE
Client	ANGLIAN WATER SERVICES LIMITED
Project	GREAT BILLING MINERAL EXTRACTION SITE

Drawing Title				SITE AREAS			
Drawn/Design	AT	Date	MAR 2017	Scales	1:1000	@	A3
Checked	EG	Approved	EG	MLM Ref	772478		
Drawing No.							Rev
772478-DWG-ENV-032							B