

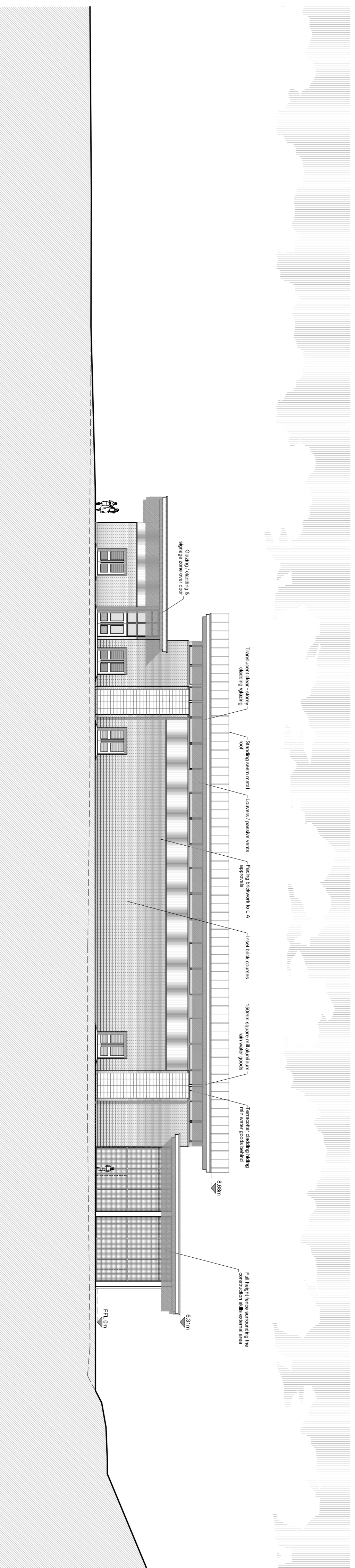
### 3- Proposed East Elevation 1:200@A1

Rev.	Date	Drawn	Checked	Description
D	12.06.09	KRJ	MC	Elevations revised & scale changed
C	15.05.09	KRJ	MC	Elevations revised & scale changed
B	29.04.09	MDL	MC	Elevations & levels updated
A	14.04.09	KRJ	MC	Ground line updated to suit SK14

Rev.	Date	Drawn	Checked	Description
D	12.06.09	KRJ	MC	Elevations revised & scale changed
C	15.05.09	KRJ	MC	Elevations revised & scale changed
B	29.04.09	MDL	MC	Elevations & levels updated
A	14.04.09	KRJ	MC	Ground line updated to suit SK14

## GSSARCHITECTURE

2 SPENCER PARADE, NORTHAMPTON, NN1 5AA  
 Tel: 01603 600000 Fax: 01603 600001  
 Email: gss@gssarch.co.uk, Web: www.gssarch.co.uk  
 Katering: 01638 513 165, Bhamd: 01275 978 310



### 4- Proposed North Elevation 1:200@A1

<b>Project Title:</b>	New Maplefields School, Farmstead Road, Corby
<b>Client:</b>	Lend Lease Projects
<b>Drawing Title:</b>	Proposed Elevations - Sports Hall and Vocational Education Building
<b>File Number:</b>	SCH132b
<b>Drawn By:</b>	KRJ
<b>Checked By:</b>	MC
<b>Scale@A1:</b>	1:200
<b>Date:</b>	27.03.09
<b>Dwg No.:</b>	SK16
<b>Rev.:</b>	D