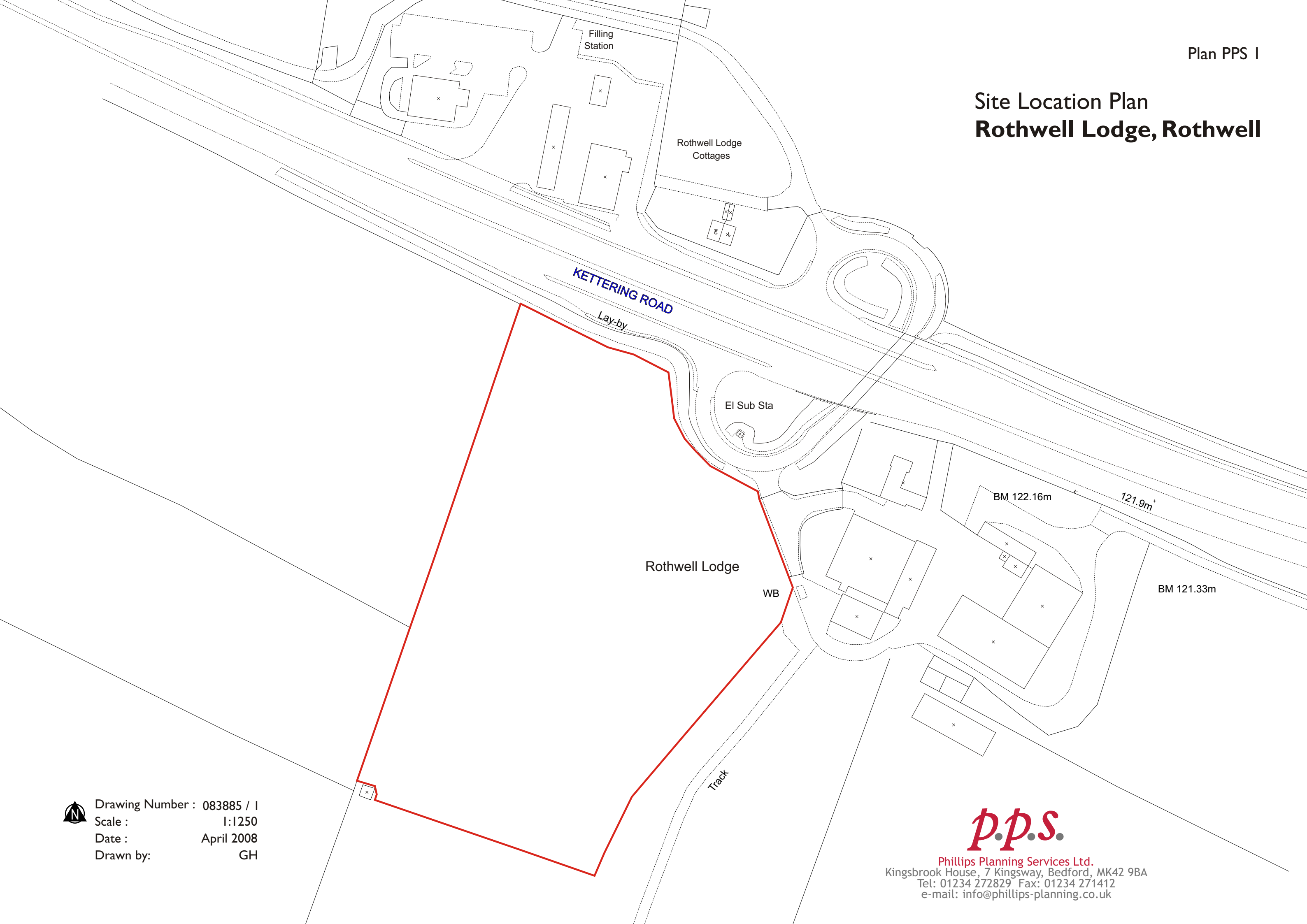


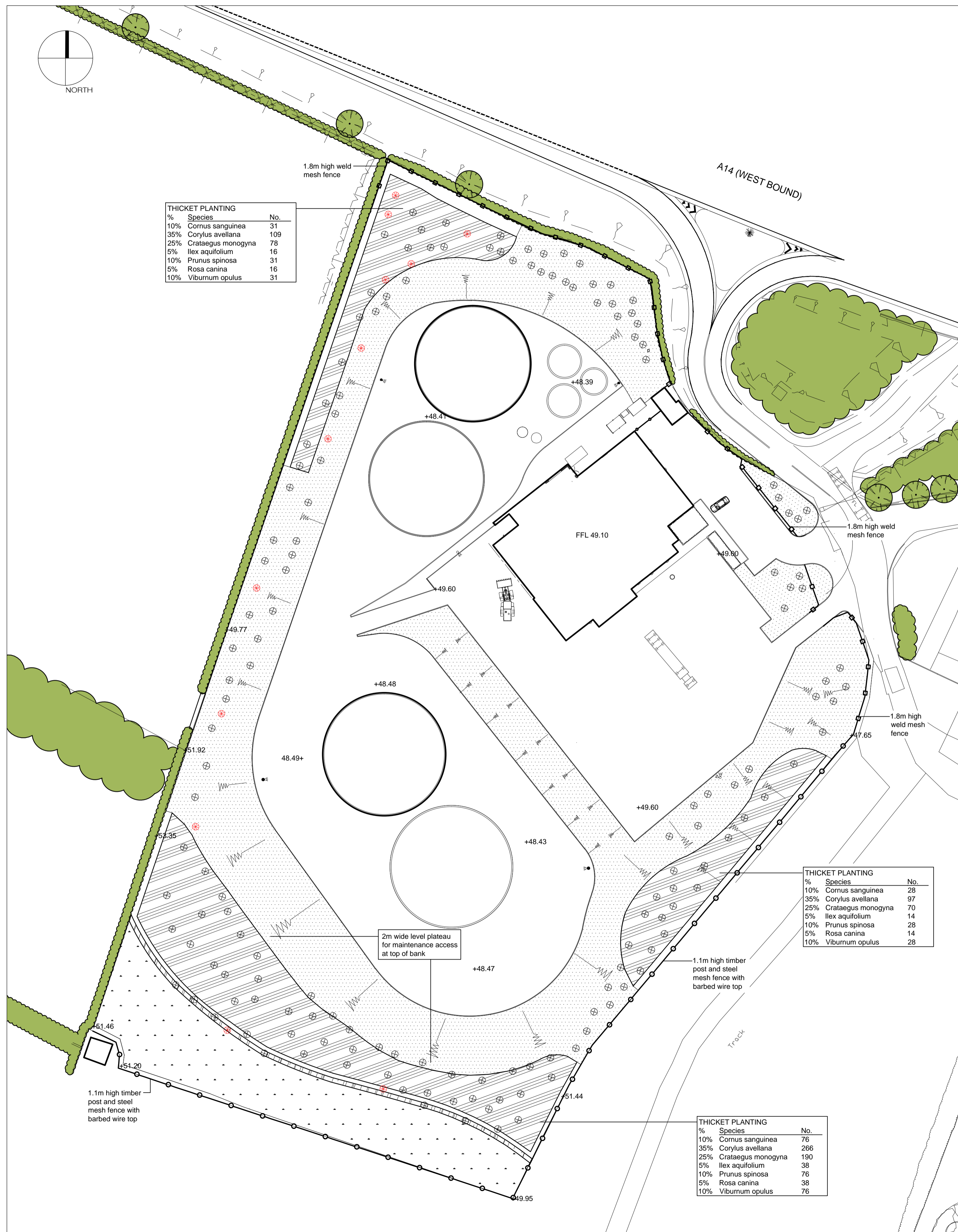
Site Location Plan Rothwell Lodge, Rothwell



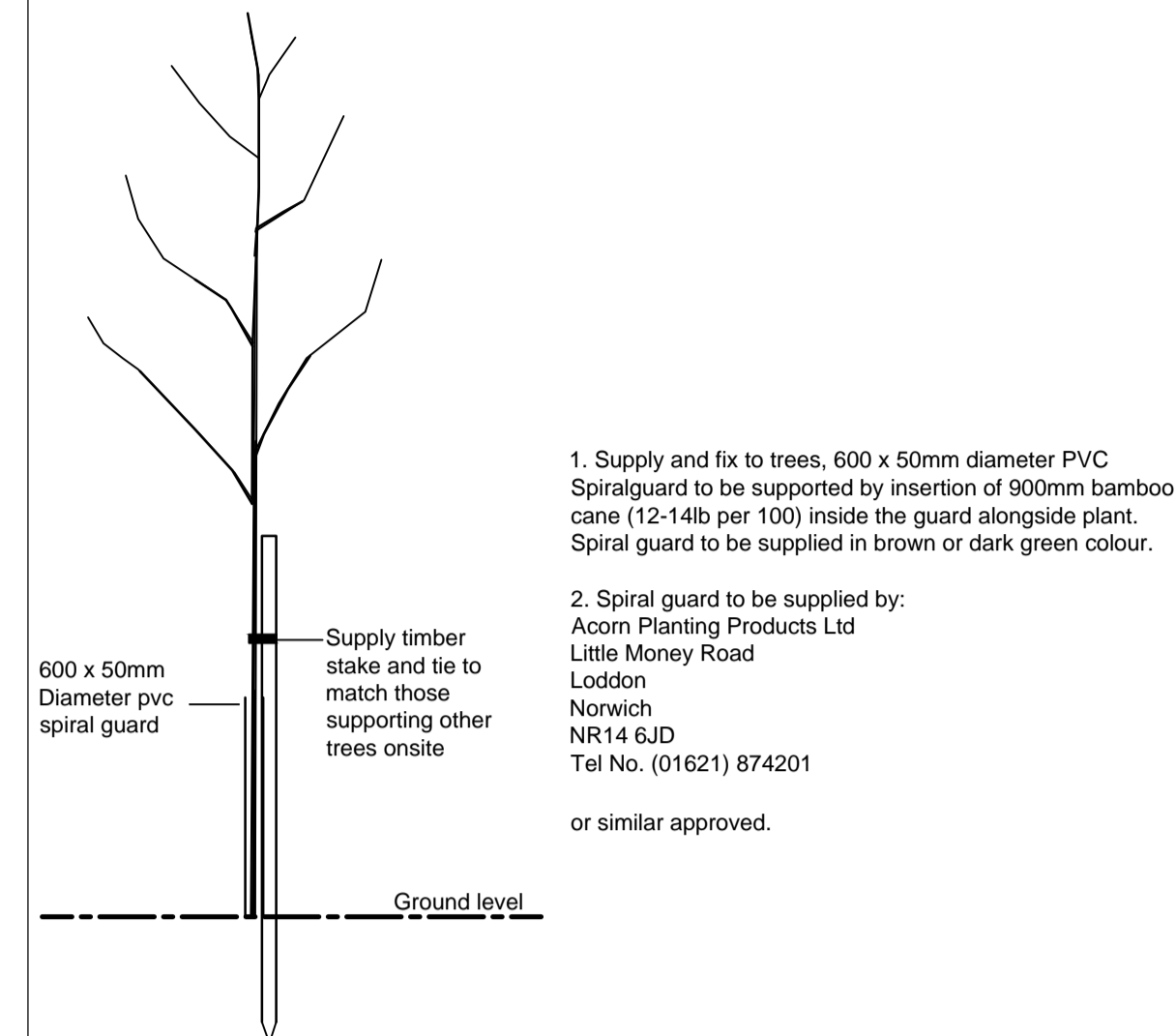
Drawing Number : 083885 / 1
Scale : 1:1250
Date : April 2008
Drawn by: GH



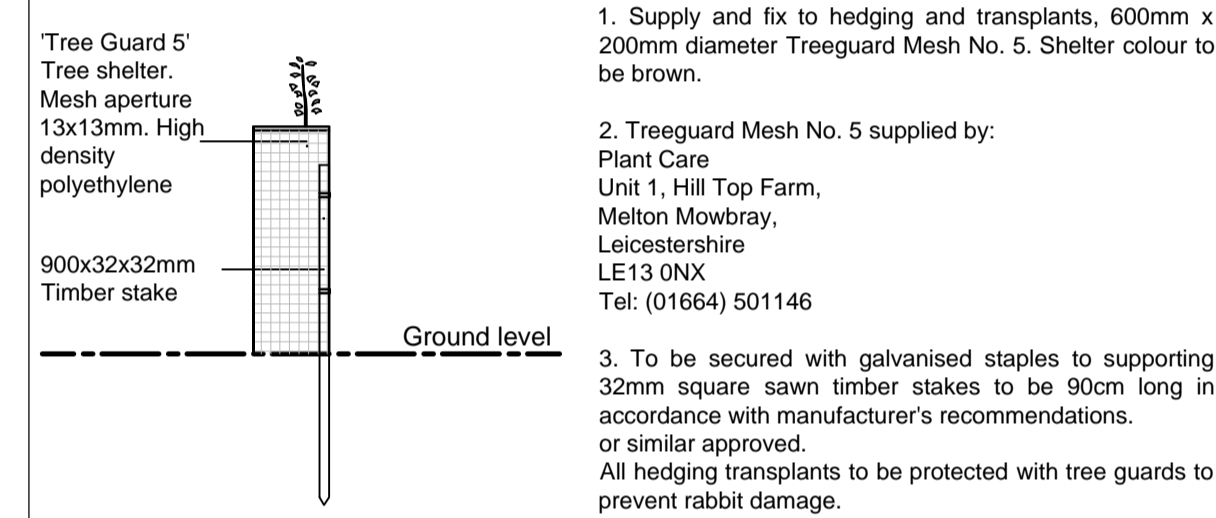
Phillips Planning Services Ltd.
Kingsbrook House, 7 Kingsway, Bedford, MK42 9BA
Tel: 01234 272829 Fax: 01234 271412
e-mail: info@phillips-planning.co.uk



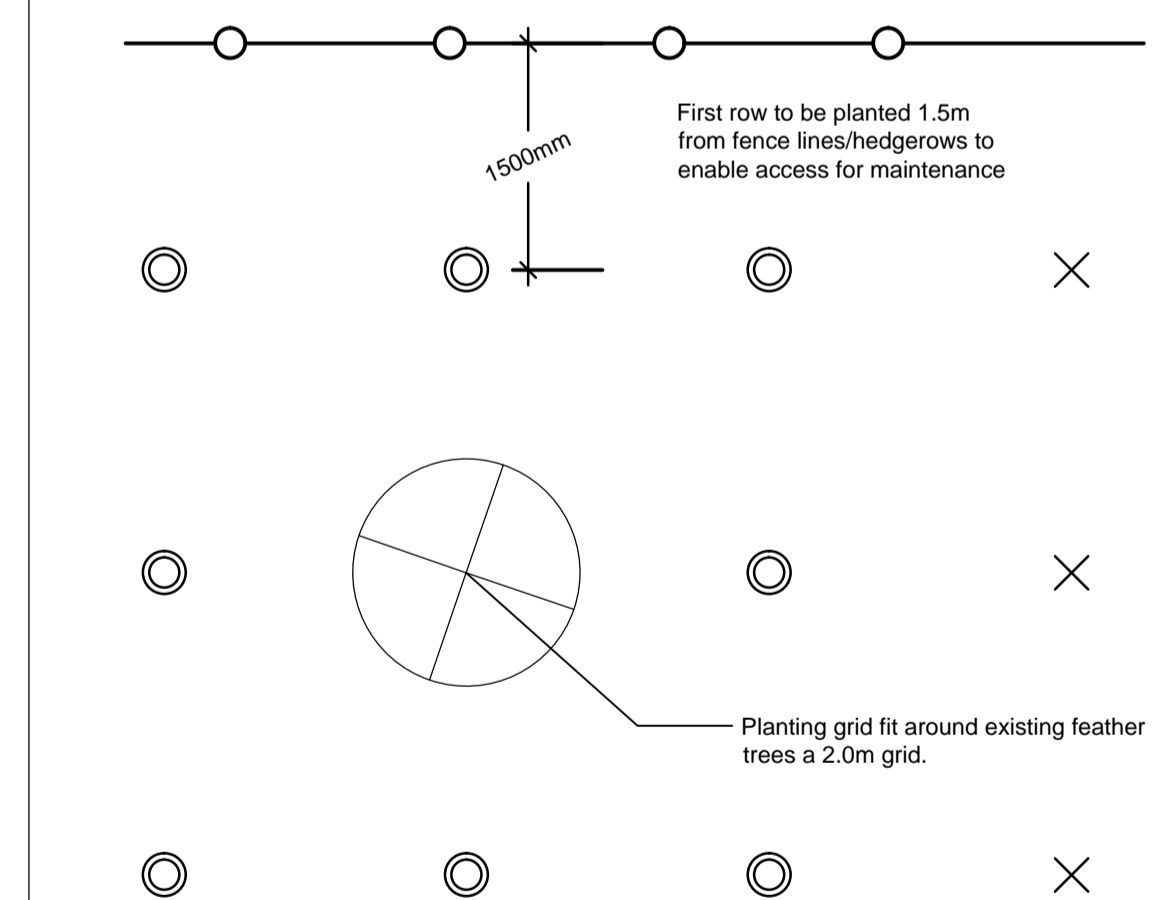
DETAIL 1: FEATHERED TREE PROTECTION Scale 1:20



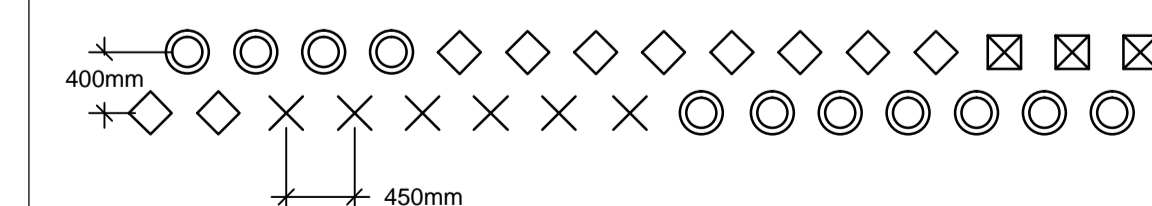
DETAIL 2: HEDGE AND TRANSPLANT PROTECTION Scale 1:20



DETAIL 3: THICKET PLANTING Scale 1:50



DETAIL 4: NATIVE HEDGEROW PLANTING Scale 1:50



COPYRIGHT RESERVED
DO NOT SCALE FROM THIS DRAWING

NOTES

KEY

- EXISTING HEDGEROW AND TREES TO BE RETAINED
- EXISTING FEATHERED TREES TO BE RETAINED
- EXISTING TREES/SHRUBS TO BE REMOVED AND REPLACED WITH PROPOSED FEATHERED TREE PLANTING 2.5- 3.0m tall
- PROPOSED NATIVE THICKET MIX PLANTING
Where thicket is planted next to a hard surface/kerb/fence, it should be positioned 1m from the edge. Transplants planted in groups of 7-15 of the same species on a 2.0m grid (see Detail 3).
- PROPOSED NATIVE HEDGEROW
Planted at 450mm centres in a double staggered row. Rows to be 500mm apart. Planted as shown in Detail 4. E = Evergreen species.
- EXISTING ORNAMENTAL SHRUB AREAS
- EXISTING MOWN GRASS AREAS
- EXISTING WILDFLOWER AREAS
Seeded with Emorsgate EM10 - Tussock Grass Mix
- SLOPE
- SECURITY FENCE/ TIMBER POST AND RAIL
See notes for fence type
- PLANNING APPLICATION BOUNDARY

12/12/11 KSN
AMENDED TO REFLECT LPA COMMENTS. DATE AUTH

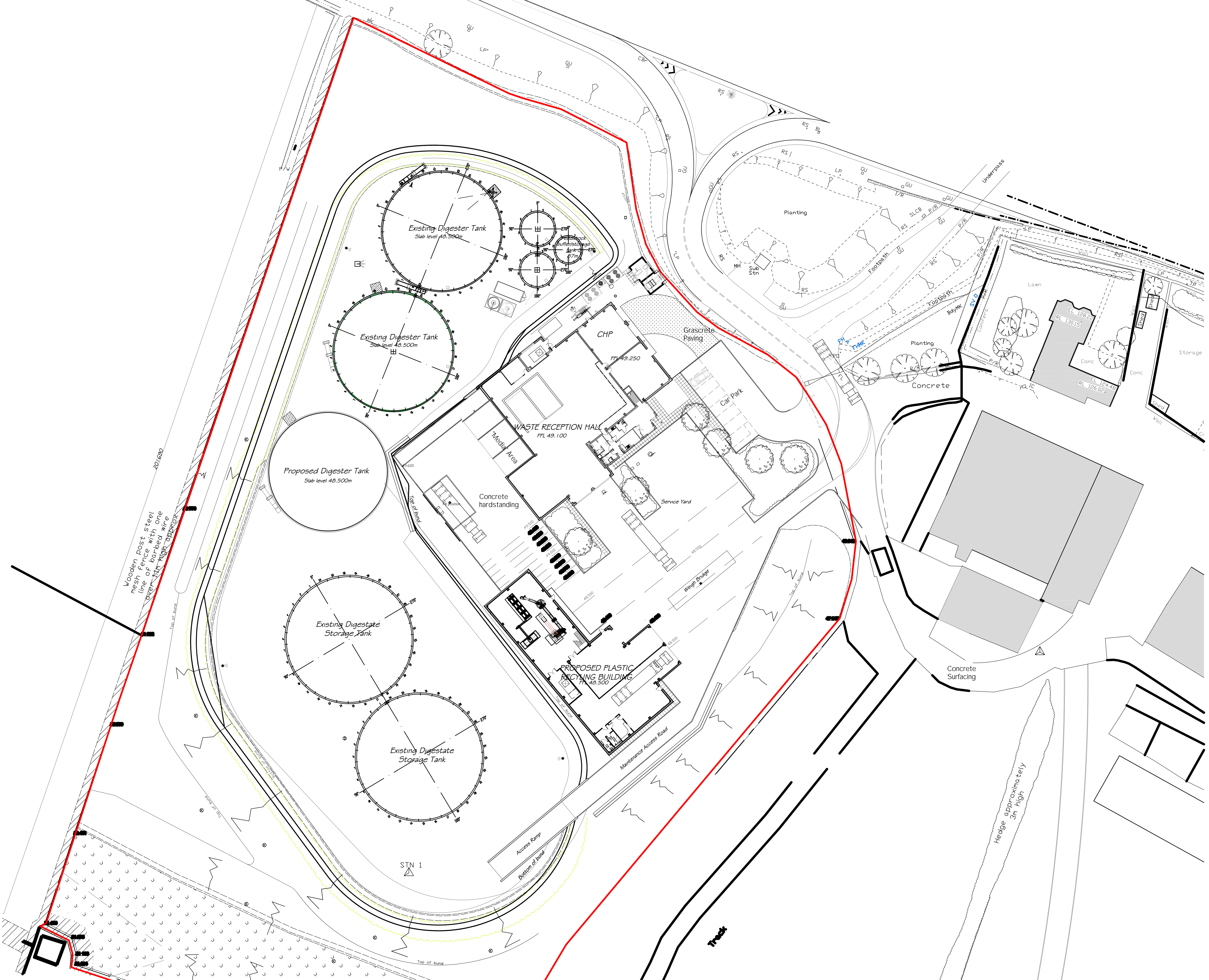


CLIENT
FERNBROOK BIO LTD.

PROJECT
**ROTHWELL LODGE FARM
ROTHWELL**

DRAWING
SOFT LANDSCAPE PLAN

CONTRACT	1234/11	DRG NO.	01
DATE	08/12/2011	DRAWN	KSN
ISSUE	PLANNING	CHECKED	BRC
SCALE	1:500	ORIG SHEET	A1
CAD FILE	1234/11-01.dwg	REV	A



No.	Rev.	By	Description
1	1	ACE	Issue for approval
2	1	ACE	Issue for approval
3	1	ACE	Issue for approval
4	1	ACE	Issue for approval
5	1	ACE	Issue for approval
6	1	ACE	Issue for approval
7	1	ACE	Issue for approval
8	1	ACE	Issue for approval
9	1	ACE	Issue for approval
10	1	ACE	Issue for approval
11	1	ACE	Issue for approval
12	1	ACE	Issue for approval
13	1	ACE	Issue for approval
14	1	ACE	Issue for approval
15	1	ACE	Issue for approval
16	1	ACE	Issue for approval
17	1	ACE	Issue for approval
18	1	ACE	Issue for approval
19	1	ACE	Issue for approval
20	1	ACE	Issue for approval
21	1	ACE	Issue for approval
22	1	ACE	Issue for approval
23	1	ACE	Issue for approval
24	1	ACE	Issue for approval
25	1	ACE	Issue for approval
26	1	ACE	Issue for approval
27	1	ACE	Issue for approval
28	1	ACE	Issue for approval
29	1	ACE	Issue for approval
30	1	ACE	Issue for approval
31	1	ACE	Issue for approval
32	1	ACE	Issue for approval
33	1	ACE	Issue for approval
34	1	ACE	Issue for approval
35	1	ACE	Issue for approval
36	1	ACE	Issue for approval
37	1	ACE	Issue for approval
38	1	ACE	Issue for approval
39	1	ACE	Issue for approval
40	1	ACE	Issue for approval
41	1	ACE	Issue for approval
42	1	ACE	Issue for approval
43	1	ACE	Issue for approval
44	1	ACE	Issue for approval
45	1	ACE	Issue for approval
46	1	ACE	Issue for approval
47	1	ACE	Issue for approval
48	1	ACE	Issue for approval
49	1	ACE	Issue for approval
50	1	ACE	Issue for approval
51	1	ACE	Issue for approval
52	1	ACE	Issue for approval
53	1	ACE	Issue for approval
54	1	ACE	Issue for approval
55	1	ACE	Issue for approval
56	1	ACE	Issue for approval
57	1	ACE	Issue for approval
58	1	ACE	Issue for approval
59	1	ACE	Issue for approval
60	1	ACE	Issue for approval
61	1	ACE	Issue for approval
62	1	ACE	Issue for approval
63	1	ACE	Issue for approval
64	1	ACE	Issue for approval
65	1	ACE	Issue for approval
66	1	ACE	Issue for approval
67	1	ACE	Issue for approval
68	1	ACE	Issue for approval
69	1	ACE	Issue for approval
70	1	ACE	Issue for approval
71	1	ACE	Issue for approval
72	1	ACE	Issue for approval
73	1	ACE	Issue for approval
74	1	ACE	Issue for approval
75	1	ACE	Issue for approval
76	1	ACE	Issue for approval
77	1	ACE	Issue for approval
78	1	ACE	Issue for approval
79	1	ACE	Issue for approval
80	1	ACE	Issue for approval
81	1	ACE	Issue for approval
82	1	ACE	Issue for approval
83	1	ACE	Issue for approval
84	1	ACE	Issue for approval
85	1	ACE	Issue for approval
86	1	ACE	Issue for approval
87	1	ACE	Issue for approval
88	1	ACE	Issue for approval
89	1	ACE	Issue for approval
90	1	ACE	Issue for approval
91	1	ACE	Issue for approval
92	1	ACE	Issue for approval
93	1	ACE	Issue for approval
94	1	ACE	Issue for approval
95	1	ACE	Issue for approval
96	1	ACE	Issue for approval
97	1	ACE	Issue for approval
98	1	ACE	Issue for approval
99	1	ACE	Issue for approval
100	1	ACE	Issue for approval

ABDS Ltd
architectural consultants

Address: 1 Stanton Close, Watlington, Oxford, OX12 9JF
 Address: West Tronchick Farm, Hadden, Cotswold, TRL3 0BT

Tel: 01865 200007
 Email: info@abds.co.uk

PROPOSED PLASTIC RECYCLING FACILITY
 FERNBROOK BIO LTD
 ROTHWELL LODGE FARM

PROPOSED SITE PLAN

SCALE: 1:200 (A3) DATE: 21.4.2011
 DRAWN BY: ACE CAD REF: 10000001

DWG No: FB/R/11/002 B