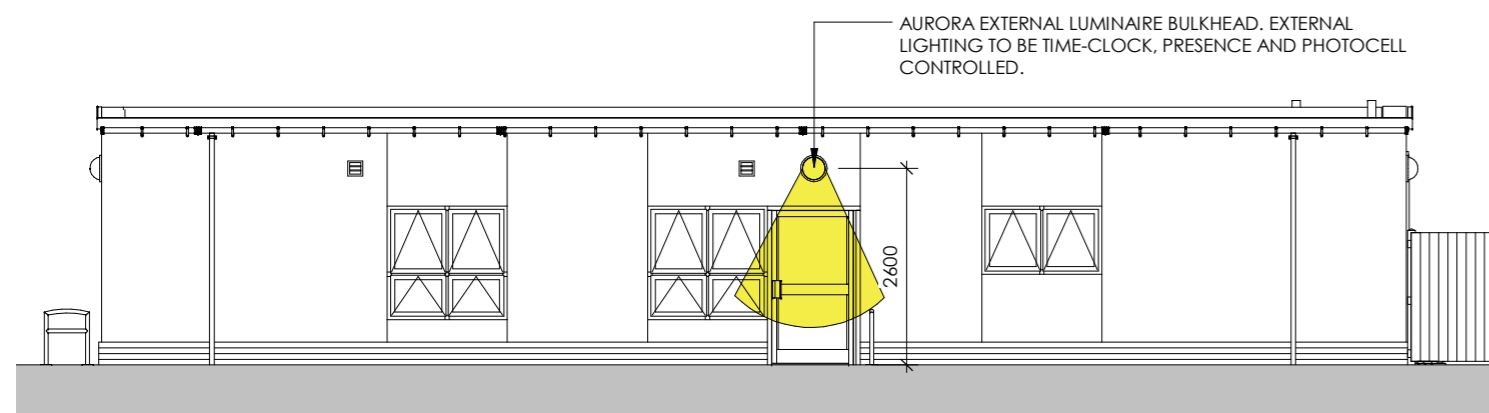


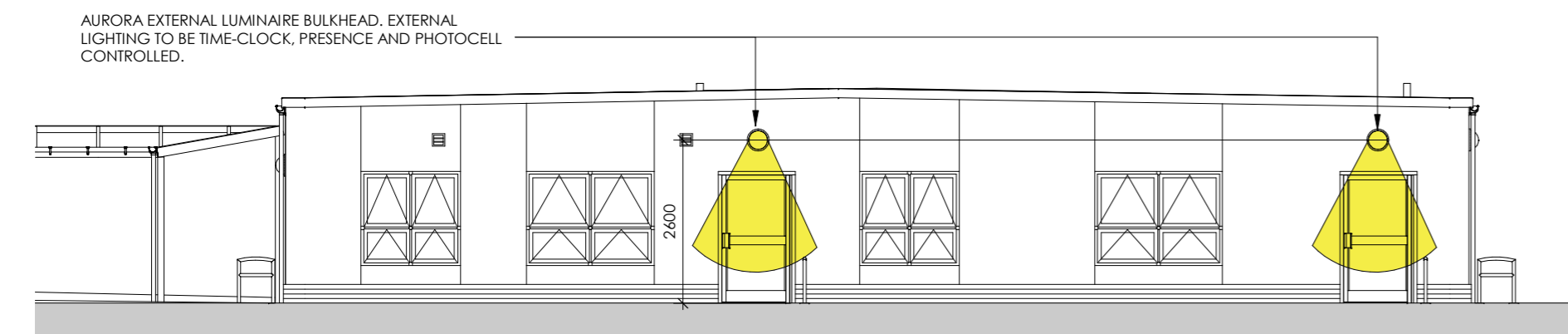
### North (External Lighting)

1 : 100



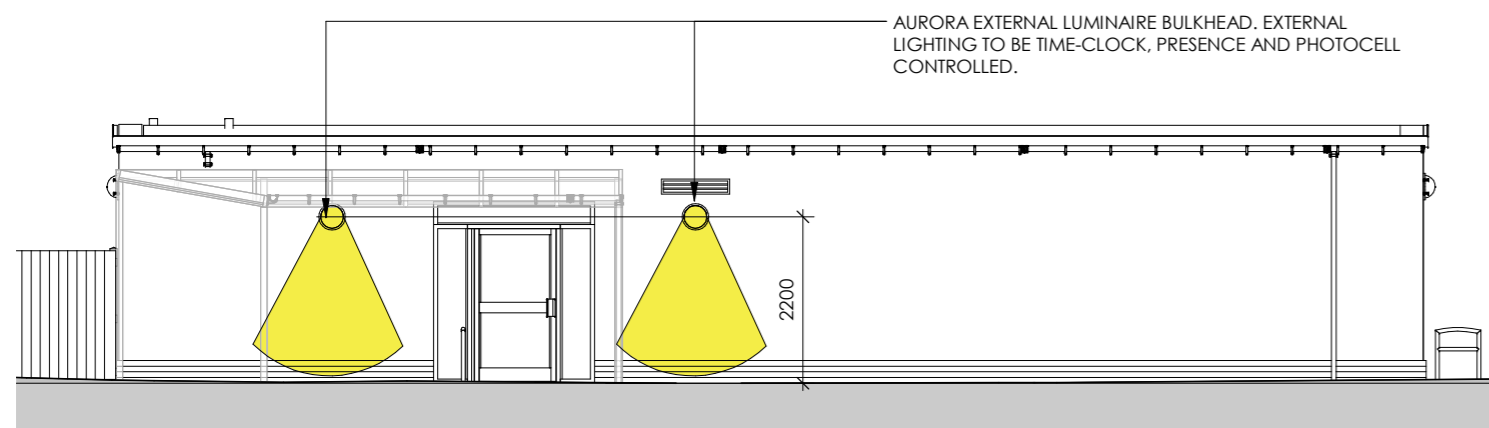
### East (External Lighting)

1 : 100



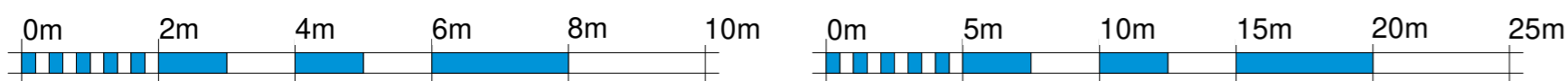
### South (External Lighting)

1 : 100



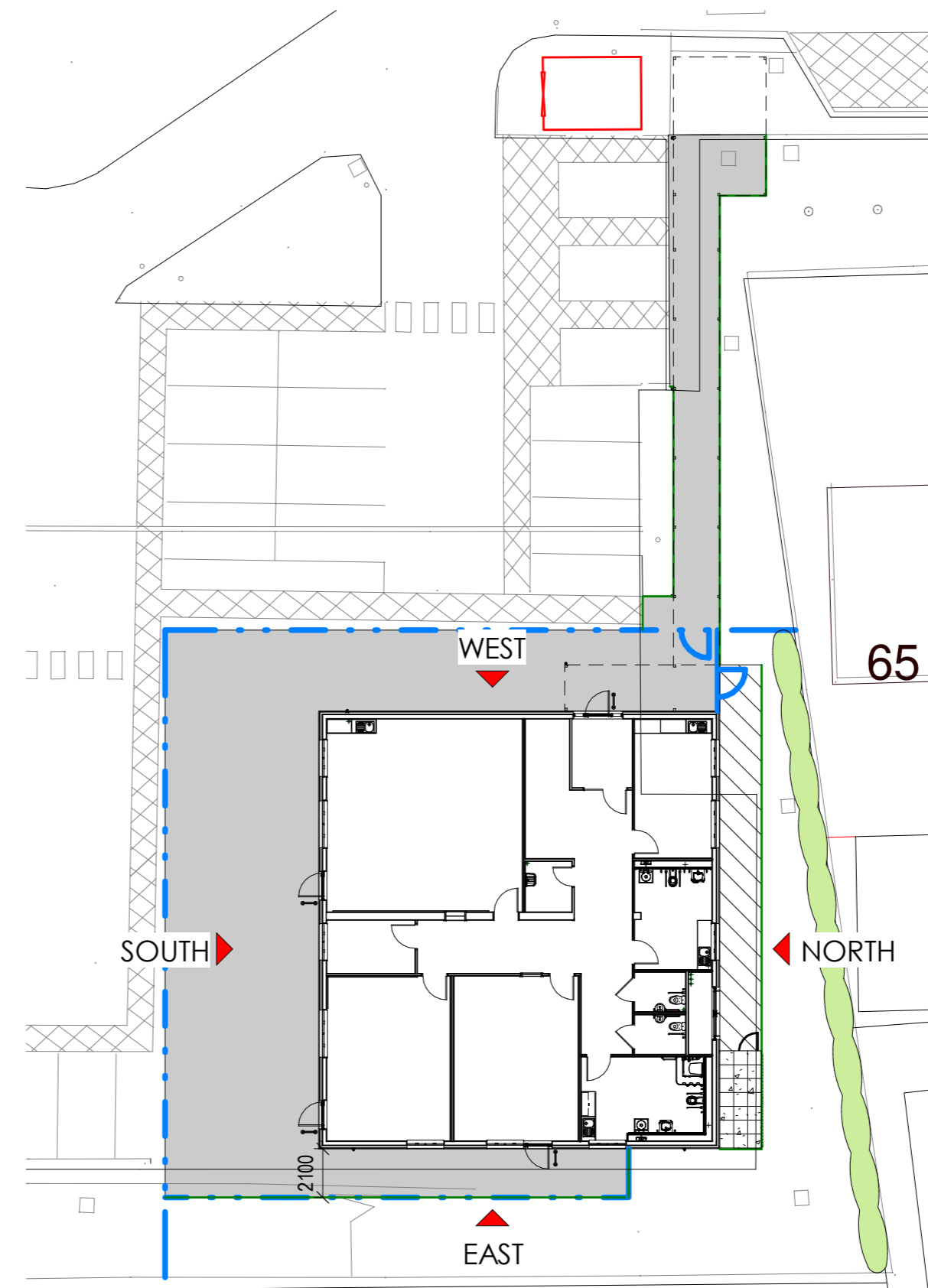
### West (External Lighting)

1 : 100



VISUAL SCALE 1:100 @ A2

VISUAL SCALE 1:250 @ A2



### External Lighting Elevation Plan

1 : 250

#### External Lighting Information

For detailed information please see product data sheet (ref: Aurora LED external Bulkhead), for general specification please see below;

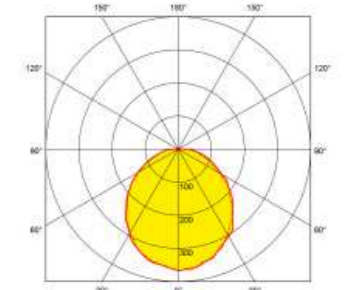
- IP66 LED bulkhead not affected by frequent switching
- IK10 polycarbonate body & diffuser for maximum vandal resistance.
- Rear entry access wiring compartment allows for easy installation.
- Separate 20mm conduit side entry
- Wall mounted
- Time clock, presence and photocell controlled.
- 50 lux at 2m.

Product Image:



25W Polycarbonate IP66 Round LED Bulkhead

Polar Curve Image



Rev	Description	By	Chk	Date
P1	CP issue / Planning Issue, June 2020	CJR	TM	30/06/2020
P2	Condenser enclosure moved, 1.8m high weldmesh inbound of main fenceline + gate removed	CJR	TM	22/07/2020

ALL DIMENSIONS ARE IN MILLIMETRES UNLESS OTHERWISE NOTED. DO NOT SCALE OFF DRAWINGS. ALL DIMENSIONS ARE NOMINAL AND MUST BE CHECKED ON SITE. ALL DRAWINGS ARE COPYRIGHT OF DARWIN GROUP LTD AND CANNOT BE REPRODUCED WITHOUT WRITTEN CONSENT OF DARWIN GROUP LTD. IF THERE ARE ANY DISCREPANCIES WITH ANY INFORMATION PROVIDED, IT IS THE CONTRACTORS RESPONSIBILITY TO NOTIFY DARWIN GROUP LTD IMMEDIATELY.

**DarwinGroup**  
Construction Has Evolved

Design — Engineering — Contracting — Offsite  
London House, Shawbury Business Park, Shawbury, Shrewsbury, SY4 4EA  
TEL: 01939 252909  
www.darwingroupltd.co.uk

PROJECT TITLE	ADDRESS
Red Kite Academy	Corby NN18 0BY

DRAWING TITLE
External Lighting Elevations

DRAWING REFERENCE						
180235	DGL	01	ZZ	DR	A	2022
PROJECT	ORIGINATOR	VOLUME	LEVEL	TYPE	ROLE	NUMBER

INITIAL ISSUE DATE	INITIAL ISSUE BY	INITIAL CHECKED BY	GIFA
29/06/20	CJR	TM	303 m <sup>2</sup>

SUITABILITY	SCALE	SHEET	REV
S2	As indicated	A2	P2
STATUS CODE	STATUS DESCRIPTION		
	For Information		