

NOTES:

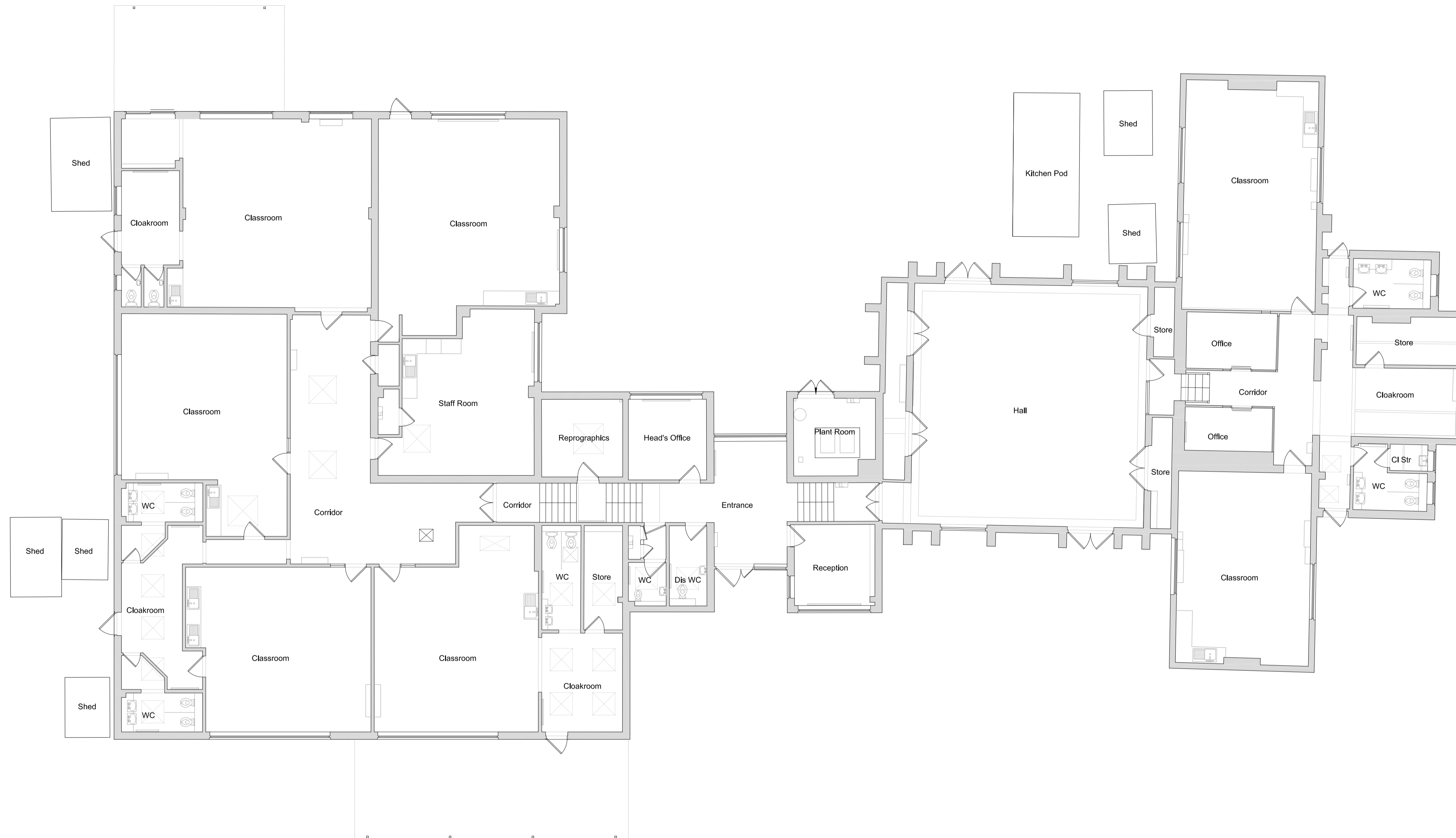
This drawing/design is for use solely in connection with the project.

This drawing/design is the copyright of STENTON OBHI ARCHITECTS LTD and must not be reissued, loaned or copied without written consent.

All dimensions/setting out to be checked on site by the contractor before construction proceeds. Use written dimensions only, do not scale from drawing.

This drawing is to be read in conjunction with all construction status information relevant to the project. Any apparent discrepancy to be brought to the attention of STENTON OBHI ARCHITECTS LTD.

Status: PL - Planning P - Preliminary
 T - Tender C - Construction
 R - Record



Rev	Date	Revision

SO^a
 STENTON OBHI ARCHITECTS

Office EU1, Science & Innovation Centre, Bletchley Park, Milton Keynes,
 Buckinghamshire, MK3 6EB

t: 01908 276670
 e: soa@so-architects.co.uk
 w: www.so-architects.co.uk

CLIENT
 Northamptonshire County Council

PROJECT
 West Haddon Primary School
 Proposed Extension and Alterations

DRAWING
 Existing Plan

SCALE: 1:100 DATE: Aug 17 DRAWN: CS CHECKED: KO

Status	Project No:	Drawing No:	Revision:
PL	NCC008	002	

