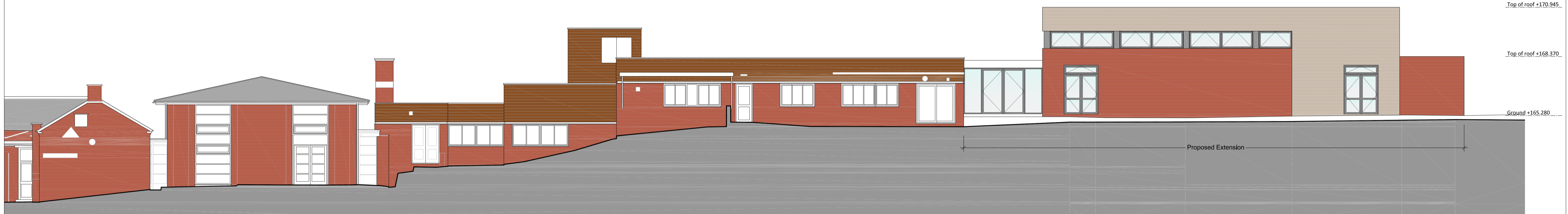




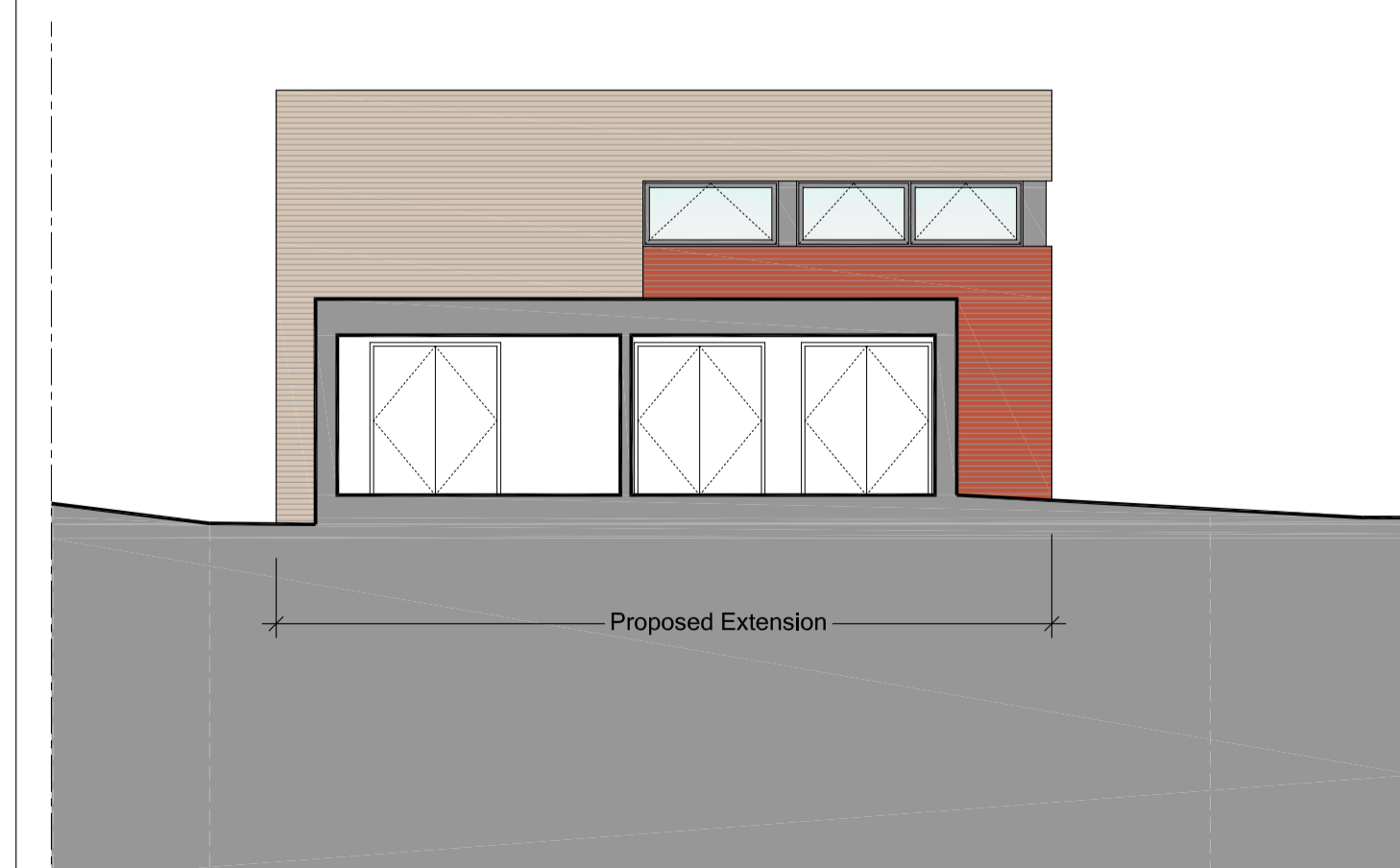
PROPOSED SOUTH ELEVATION 1:100@A1



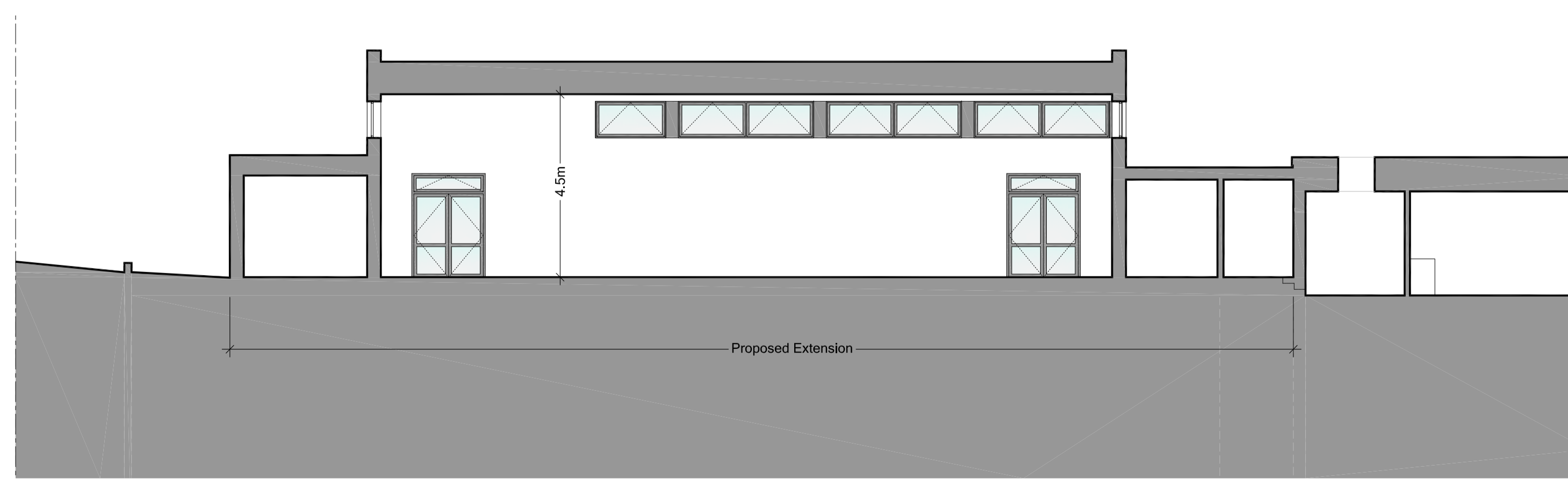
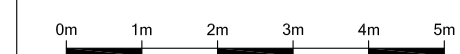
PROPOSED EAST ELEVATION 1:100@A1



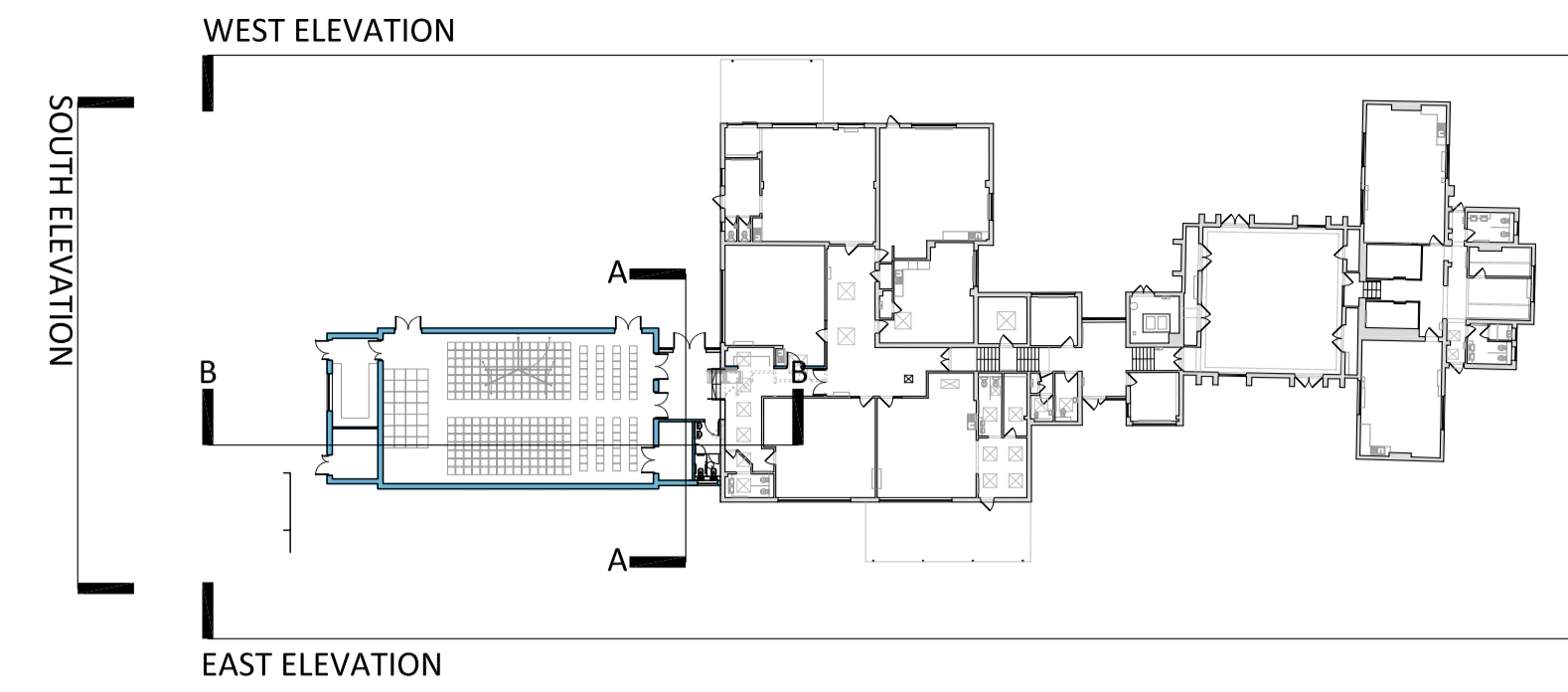
PROPOSED WEST ELEVATION 1:100@A1



PROPOSED SECTION AA 1:100@A1



PROPOSED SECTION BB 1:100@A1



NOTES:

This drawing/design is for use solely in connection with the project.

This drawing/design is the copyright of STENTON OBHI ARCHITECTS LTD and must not be reissued, loaned or copied without written consent.

All dimensions/setting out to be checked on site by the contractor before construction proceeds. Use written dimensions only, do not scale from drawing.

This drawing is to be read in conjunction with all construction status information relevant to the project. Any apparent discrepancy to be brought to the attention of STENTON OBHI ARCHITECTS LTD.

Status: PL - Planning P - Preliminary  
 T - Tender T - Tender  
 R - Record C - Construction

**PROPOSED MATERIALS**

Walls Generally:  
 Fairface brickwork panels to match existing with complementary panels in a light buff

Flat Roofs:  
 Single ply membrane with PPC aluminium capping

Windows and External Doors:  
 PPC aluminium frames

Rev	Date	Revision

**SO<sup>a</sup>**  
 STENTON OBHI ARCHITECTS

Office EU1, Science & Innovation Centre, Bletchley Park, Milton Keynes, Buckinghamshire, MK3 6EB

t: 01908 276670  
 e: soa@so-architects.co.uk  
 w: www.so-architects.co.uk

CLIENT  
 Northamptonshire County Council

PROJECT  
 West Haddon Primary School  
 Proposed Extension and Alterations

DRAWING  
 Proposed Elevations

SCALE:	DATE:	DRAWN:	CHECKED:
1:100	Aug 17	CS	KO

Status:	Project No:	Drawing No:	Revision:
PL	NCC008	005	