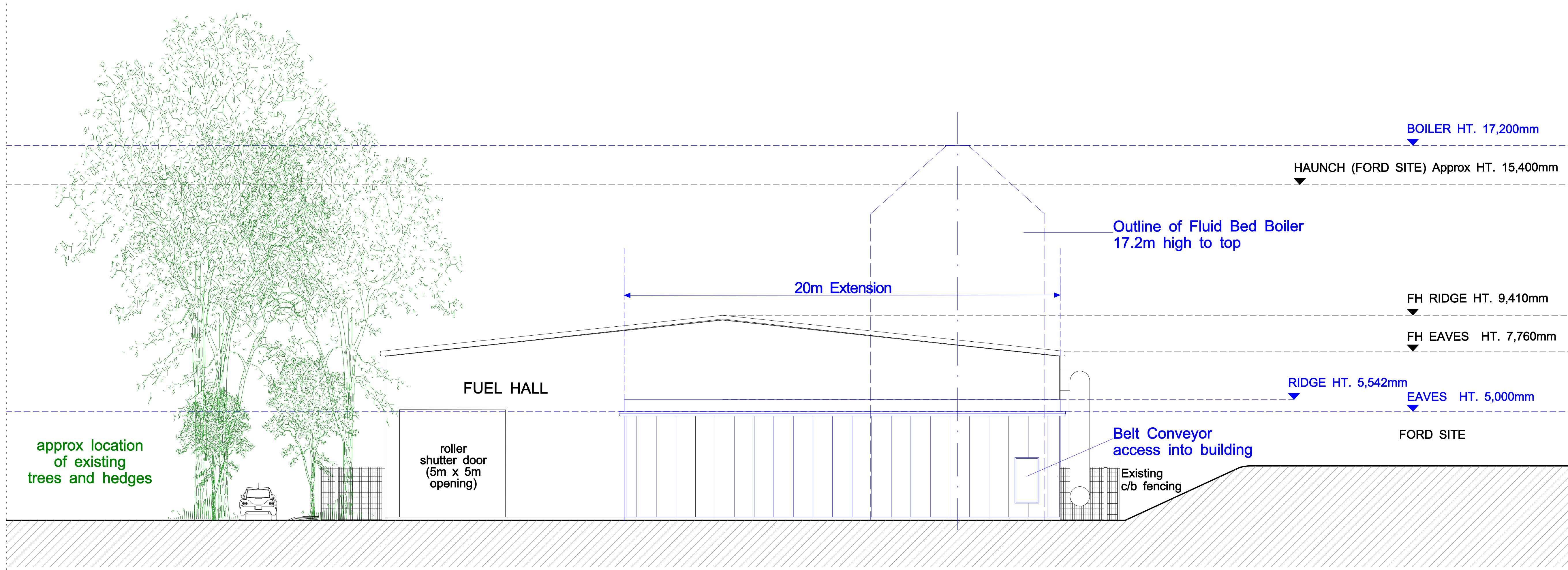


THIS DRAWING HAS BEEN GENERATED USING DRAWINGS PROVIDED BY THE WASTE RECYCLING GROUP

ALL DIMENSIONS ARE TO BE VERIFIED ON SITE. PLEASE CONTACT THE ARCHITECT FOR CLARIFICATION ON DISCREPANCIES - DO NOT ASSUME.

### REVISIONS

Rev	Date	Description	Sig
A	23/07/15	Revised as per meeting dated 15/07/15.	JLB
B	27/07/15	R/S sizes updated.	DV
C	30.07.15	Updates including, tree heights, additional PAC Dosing System, Gas Scrubber.	DV



PROPOSED SOUTH ELEVATION (FROM WITHIN CONCRETE HARDSTANDING)

### Vagdia and Holmes

CHARTERED ARCHITECTS  
The Architect's Studio,  
12a Coventry Canal Basin,  
St Nicholas Street, Coventry, CV1 4LY  
(t) 024 7622 2393 (f) 024 7655 0324  
(e) info@vagdiaholmes.com

Project: Proposed CHP Biomass Plant with Water Treatment Facility, Brown's Road, Daventry.

Client: Midland Planning Services

Title: Proposed South and East Elevations

Date: June 2015  
Drawn by: JLB  
Checked by: DV  
Scale: 1:200 @ A3  
1:100 @ A1  
Drawing Number:

1534-EV-006C

For: PRELIMINARY

This drawing is copyright © to Vagdia & Holmes Limited 2015. All Rights Reserved  
This drawing is the property of Vagdia & Holmes Limited. It must not be copied or reproduced or divulged to anyone without written permission.