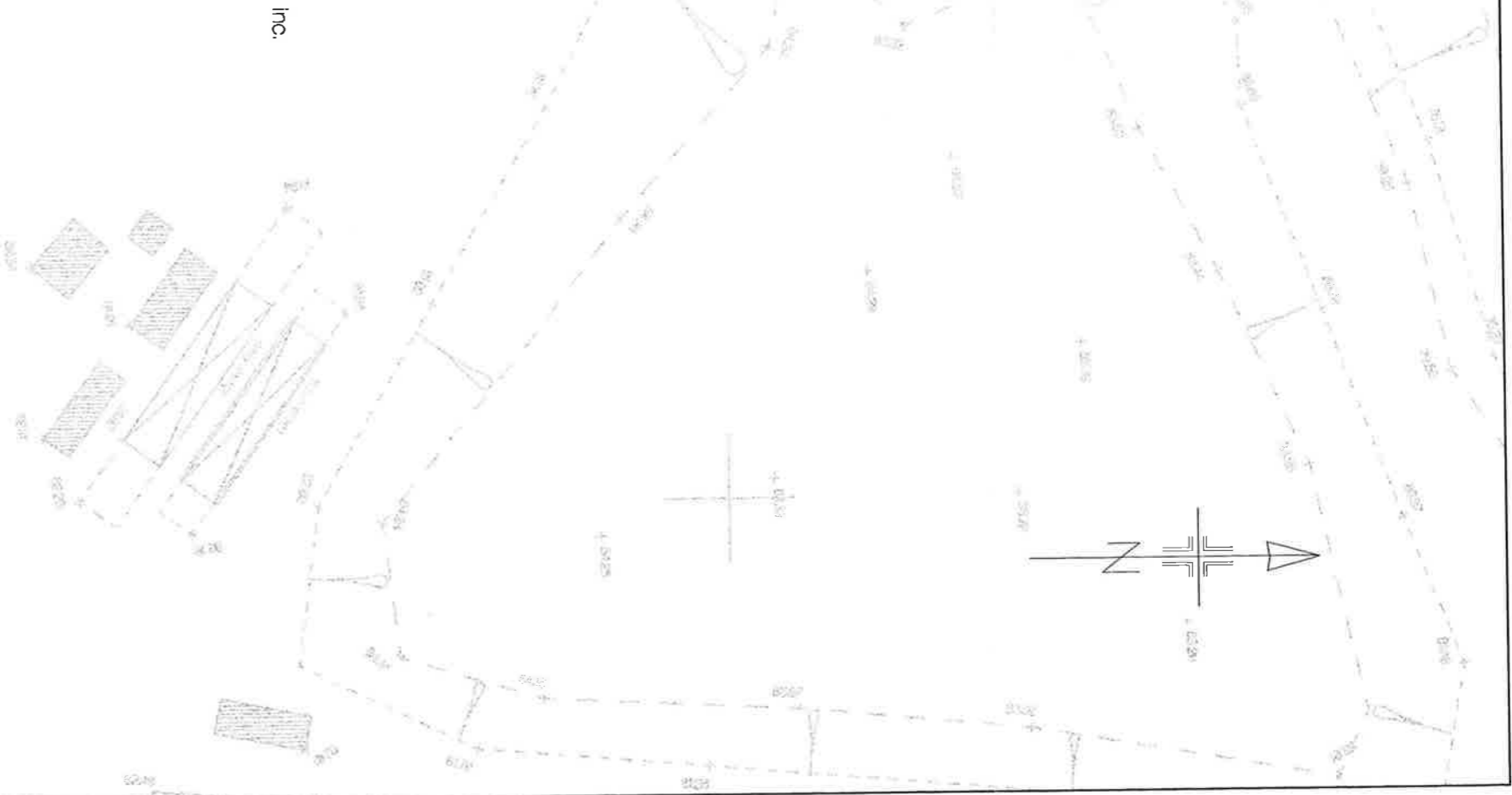
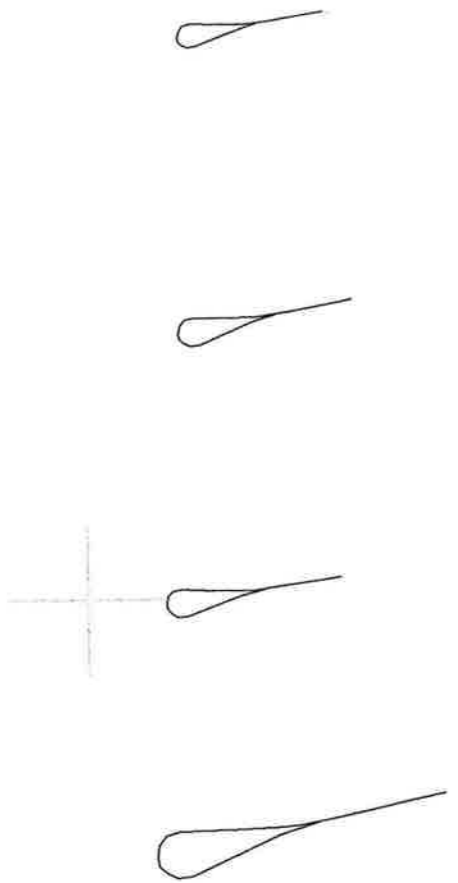


Application site boundary

- Notes:
1. Dimensions of containerised gas engine units - 10.42 X 3.32 X 4.487 m
 2. See attached scanned image for example of containerised gas engine unit



Inc.



WOOTTON LANDFILL SITE



Rev.	Description	Date/File Ref.
B	Amendments to notes in legend and flare stack orientation	A] PA_02A_BFCW 03/05/02
A	Access gate for site monitoring, PEC facility, fuel oil storages, text labels, notes and containerised gas engines added. Position of leachate treatment facility, effluent/influent holding tanks and accessroad amended. Swap paths deleted	A] PA_02AFCW 26/04/02
-	Based upon digital data supplied by Aspen Burrow Crocker	A] PA_02FCW 28/11/01



Client
Viridor Waste Management Ltd

Project
ENVIRONMENTAL CONTROL COMPOUND

Title
Amended Site Plan

Scale	1:500	Date	May 2002
Drawn	SPH	Checked	S.A.
		Approved	Stephen J. Mundy
Drawing Number	C2354/PA/02A	Revision	B
			A2 594 x 420

Applied Environmental Research Centre Ltd



AERC

Tey Grove,
Elm Lane,
Feering,
Colchester,
Essex.
CO6 9ES
www.aerc.co.uk

Telephone : 01376 572582

Facsimile : 01376 572700

E-mail : aerc@aerc.co.uk

