

Primary School Child Health Profile

East Northamptonshire September 2018

East Northants is similar to the national England on the majority of the child health indicators included in this profile.

East Northants is significantly better than the national average on the following indicators:

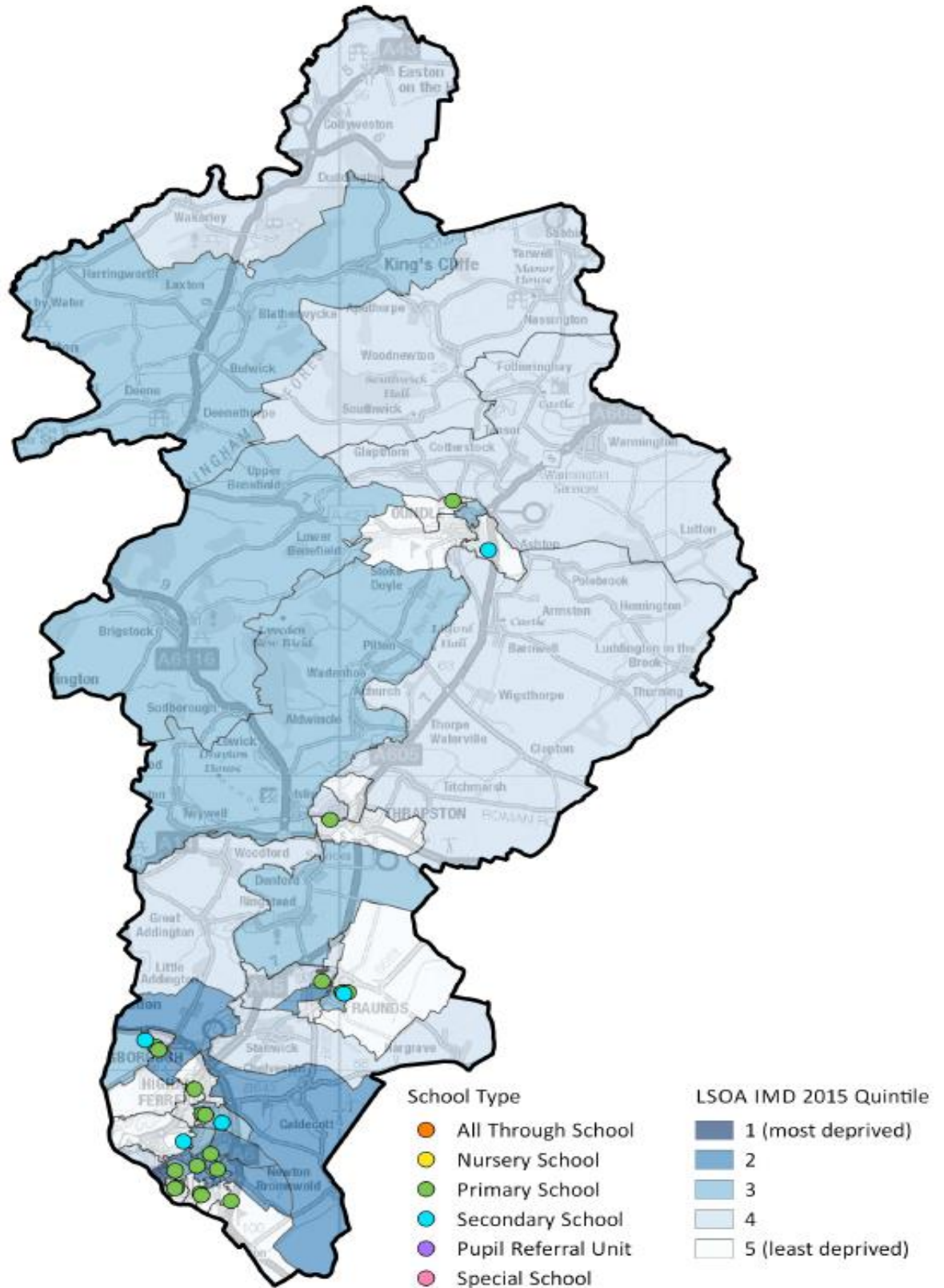
- Proportion of under 16s in low income families
- Proportion of overweight or obese children in Reception

East Northants is significantly worse than the national average on the following indicators:

- Proportion of children achieving 5+ GCSEs at grades A*-C
- Proportion of pregnant women smoking at time of delivery
- Admissions to hospital for lower respiratory infections
- Admissions to hospital for intentional self-harm

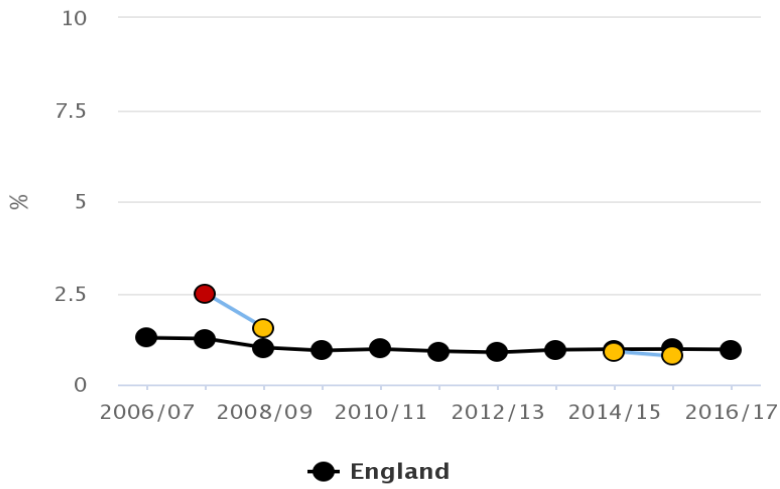
Area Map

Map of school locations with LSOA IMD 2015 quintile rankings (1 being 20% most deprived areas nationally)

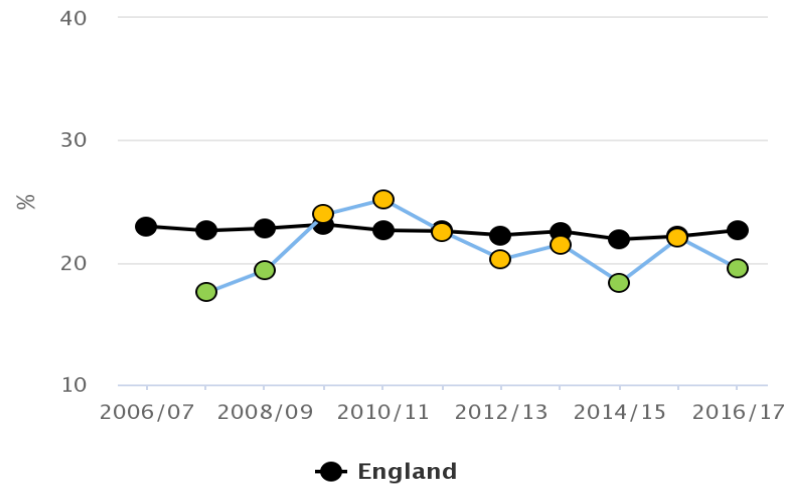


Health Improvement

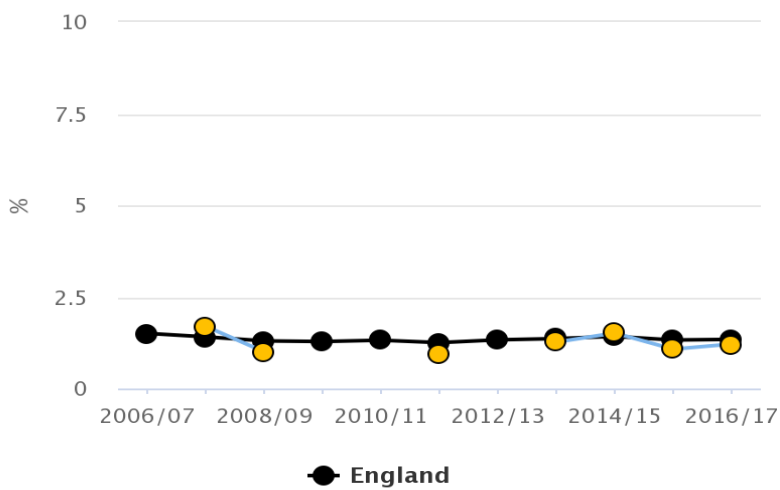
Reception: Prevalence of underweight – East Northamptonshire



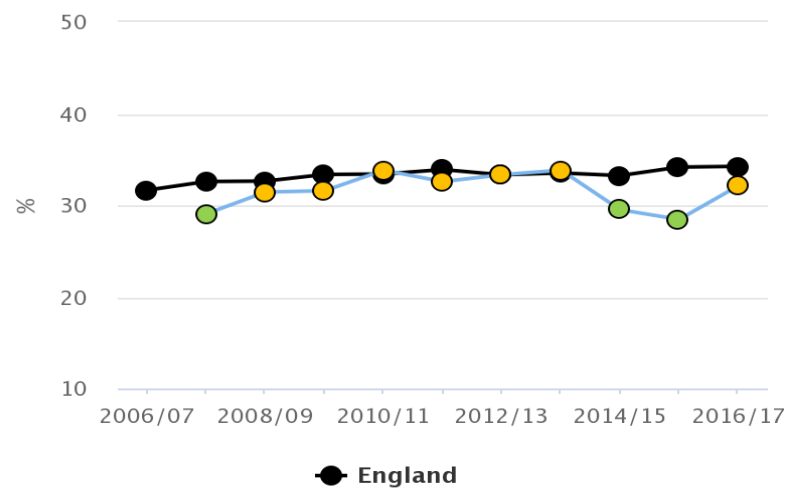
Reception: Prevalence of overweight (including obese) – East Northamptonshire



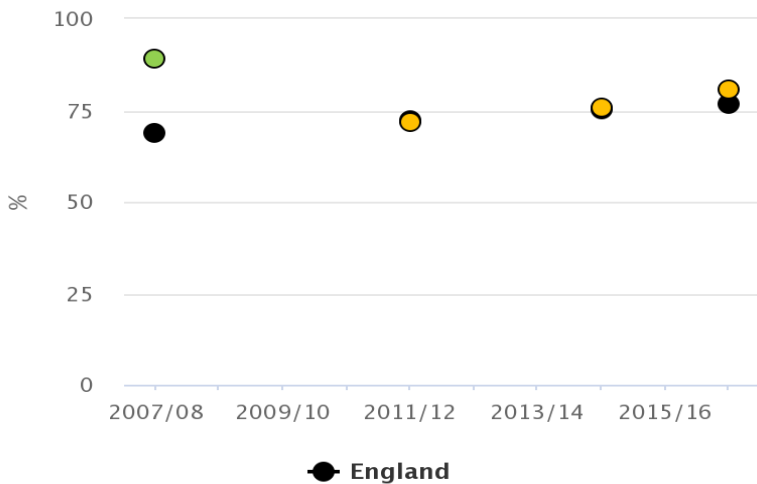
Year 6: Prevalence of underweight – East Northamptonshire



Year 6: Prevalence of overweight (including obese) – East Northamptonshire



4.02 – Proportion of five year old children free from dental decay – East Northamptonshire



Key:

- Significantly better than the England average
- Not significantly different from the England average
- Significantly worse than the England average

Child Health Summary

The chart below shows how the health of children in this area compares with the rest of England. This area's result for each indicator is shown as a circle. The average for England is shown by the black line, which is always at the centre of the chart. The range of results for all local areas in England is shown as a grey bar. A red circle means that this area is significantly worse than England, while a green circle means that this area is significantly better than England for that indicator. However, a green circle may still indicate an important public health problem.

Key:

- Significantly better than England average
- Not significantly different from England average
- Significantly worse than England average
- No significance can be calculated



Indicator	Year	Unit	Local Value	Eng Avg	Eng Worst	England Range	Eng Best
1 Children in low income families (under 16s)	2015	%	11.3	16.8	30.5		2.7
2 GCSEs achieved (5A*-C including English & Maths)	2015/16	%	51.6	57.8	44.8		78.7
3 Pupil absence	2016/17	%	4.7	4.7	6.0		2.6
4 Killed and seriously injured on roads	2014-16	rate per 100,000	45.7	39.7	567.0		13.5
5 Low birth weight of term babies	2016	%	3.7	2.8	5.8		0.7
6 Breastfeeding initiation	2016/17	%	74.5	74.5	37.9		96.7
7 Smoking status at time of delivery	2016/17	%	13.5	10.7	28.1		2.3
8 5 year olds free of tooth decay	2016/17	%	80.9	76.7	50.6		95.6
9 Excess weight in Reception	2016/17	%	19.5	22.6	31.5		14.7
10 Excess weight in Year 6	2016/17	%	32.1	34.2	43.9		21.2
11 Teenage pregnancy rate	2016	rate per 1,000	18.4	18.8	36.7		3.3
12 Smoking prevalence - regular smokers aged 15	2009-12	%	9.3	8.7	12.9		3.2
13 Infant death	2014-16	rate per 1,000	4.7	3.9	7.9		0.0
14 Hospital stays for unintentional and deliberate injuries (0-14 years)	2016/17	rate per 10,000	88.6	101.5	190.5		43.3
15 Hospital stays for lower respiratory infections	2016/17	rate per 100,000	566.3	446.4	940.6		38.0
16 Alcohol specific hospital stays, under 18s	2014/15-16/17	n/a	45.9	34.2	100.0		6.5
17 Hospital stays for asthma, diabetes and epilepsy	2016/17	rate per 100,000	281.7	303.7	611.4		35.8
18 Hospital stays for intentional self-harm	2016/17	rate per 100,000	235.6	185.3	578.9		50.6
19 Deprivation score (IMD 2015)	2015	n/a	14.2	21.8	42.0		5.0

Sources: Public Health England (Public Health Outcomes Framework; Local Alcohol Profiles for England; Local Health; Local Authority Health Profiles)
NHS Outcomes Framework

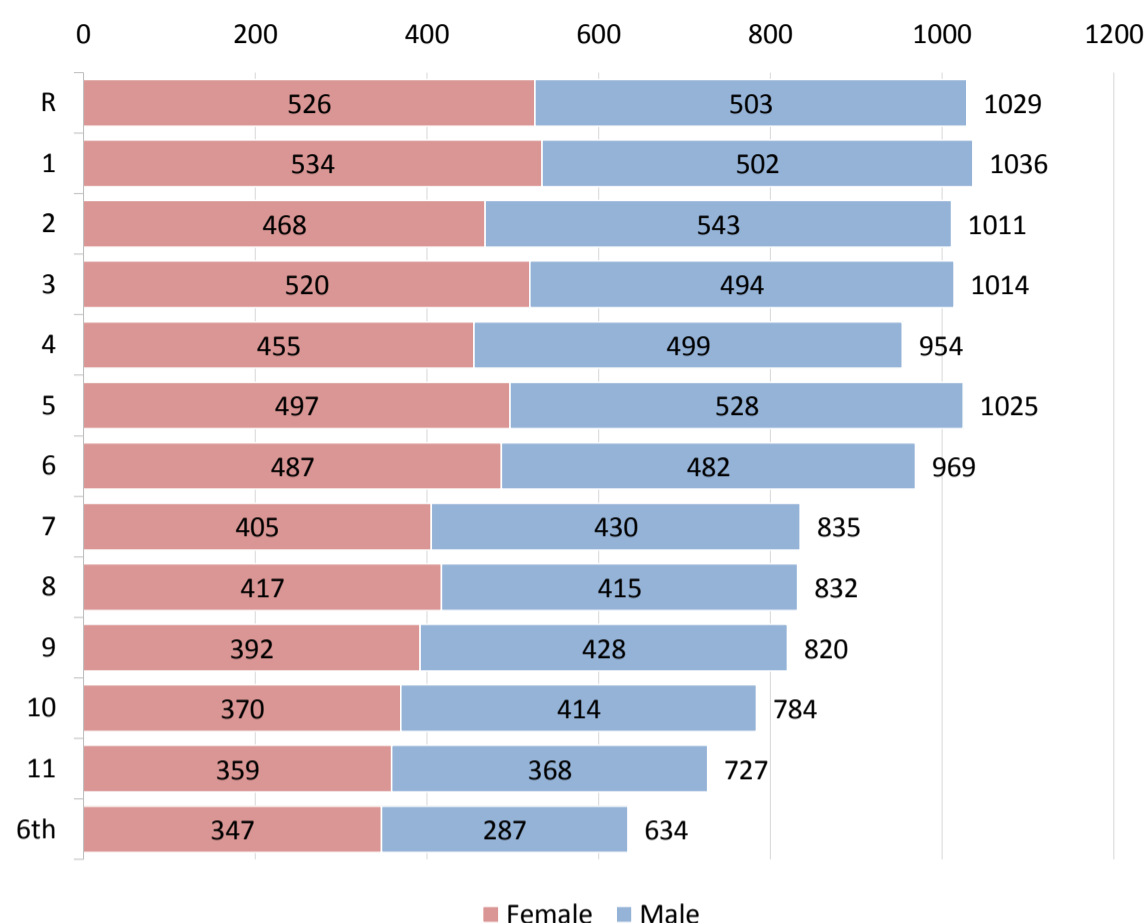
Data accessed August 2018

School Context Profile

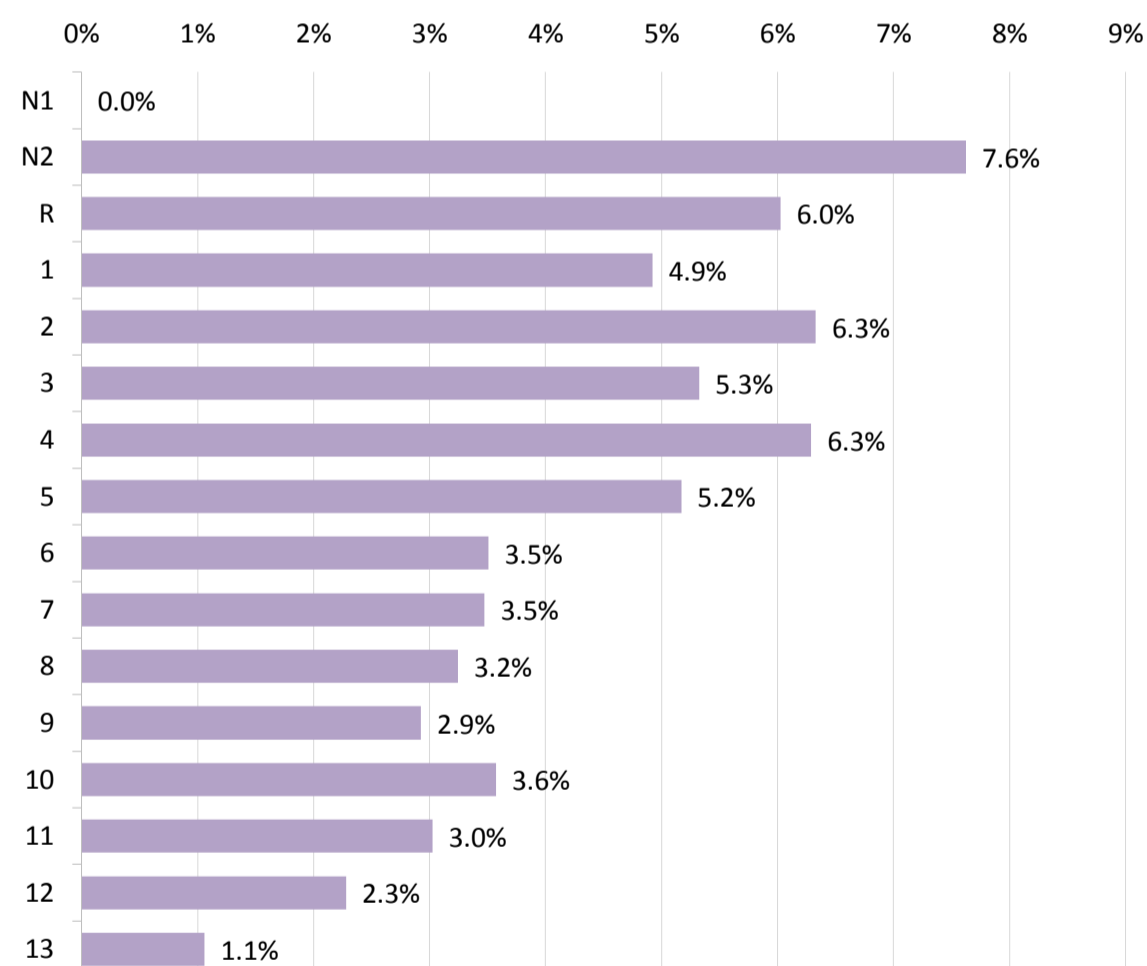
Demographics & Pupil Characteristics

Pupil Characteristics	2016	2017	2018
Number on Roll	11642	11847	11935
% Eligible for free school meals (Not USM)	2016	2017	2018
	10.6%	9.2%	7.3%
England % FSM Primary/Nursery	14.5%	14.1%	13.7%
England % FSM Secondary	13.2%	12.9%	12.4%
England % FSM Special	36.5%	35.9%	35.9%
% of each gender on roll	2016	2017	2018
Girls	49%	49%	50%
Boys	51%	51%	50%
Special Educational Needs	2016	2017	2018
% with SEN Statement/EHCP	1.3%	1.1%	1.0%
% with SEN but no Statement	9.5%	10.4%	10.9%
2018 Statements/EHCP England Primary = 1.4%	2018 Statements/EHCP England Secondary = 1.6%		
by Primary Need	2016	2017	2018
Autistic Spectrum Disorder	93	98	88
Behaviour, Emotional & Social Difficulties (SEMH)	284	270	35
Hearing Impairment	23	22	254
Moderate Learning Difficulty	271	284	5
Multi-Sensory Impairment	<5	8	40
Non Specific	18	42	98
Other Difficulty / Disability	87	102	39
Physical Disability	27	32	37
Profound & Multiple Learning Difficulty	41	41	243
Speech, Language and Communication Needs	209	230	280
Severe Learning Difficulty	<5	<5	<5
Specific Learning Difficulty	193	225	274
Visual Impairment	13	16	17
Language	2016	2017	2018
England Primary % with English as a second language	20.1%	20.6%	21.2%
England Secondary % with English as a second language	15.7%	16.2%	16.6%
School % EAL	3.6%	4.1%	4.5%
English	11014	11141	11397
Hungarian	9	11	14
Lithuanian	12	21	19
Latvian	<5	<5	<5
Polish	110	128	147
Romanian	36	49	71
Serbian/Croatian/Bosnian	<5	<5	5
Slovak	<5	7	8
Other	275	249	214
Ethnicity	2016	2017	2018
None required (under 5 pre-2017)	1%		
Bangladeshi	0%	0%	0%
Indian	0%	0%	0%
Other Asian	0%	0%	0%
Pakistani	0%	0%	0%
Black African	1%	1%	1%
Black Caribbean	0%	0%	0%
Other Black	0%	0%	1%
Chinese	0%	0%	0%
Other Mixed	1%	1%	1%
White/Asian	1%	1%	1%
White/Black African	1%	1%	0%
White/Black Caribbean	1%	1%	1%
Not Yet Obtained	0%	0%	0%
Other Ethnic Group	0%	0%	0%
Refused	0%	0%	0%
White British	89%	89%	89%
White Irish	0%	0%	0%
Irish Traveller	0%	0%	0%
White Other	3%	3%	4%
Gypsy/Roma	0%	0%	0%
Non White British	9%	10%	11%
England Primary % non WBRI	31.4%	32.1%	33.1%
England Secondary % non WBRI	27.9%	29.1%	30.3%
East Northants Exclusions	2014/15	2015/16	2016/17
Permanent	9	5	22
% of pupils Fixed	1.7%	1.8%	2.2%
Northamptonshire Exclusions	2014/15	2015/16	2016/17
Permanent	139	95	141
% of pupils Fixed	1.8%	2.1%	2.2%

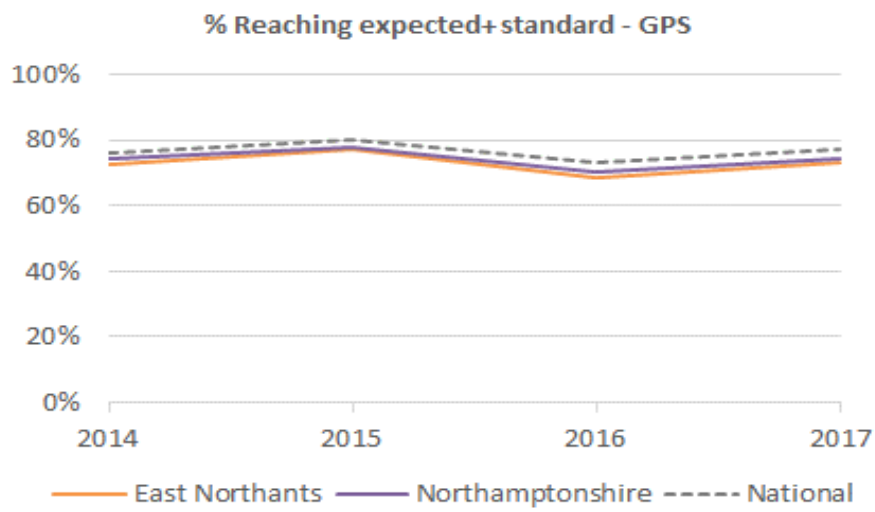
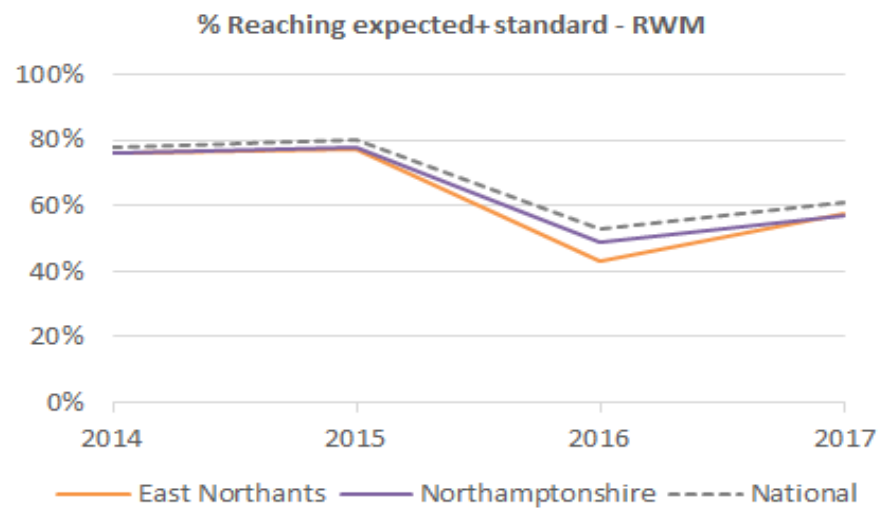
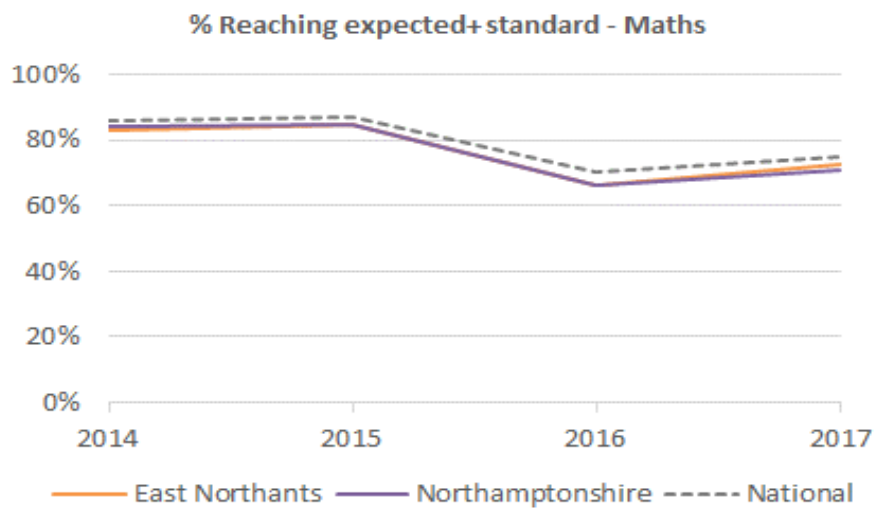
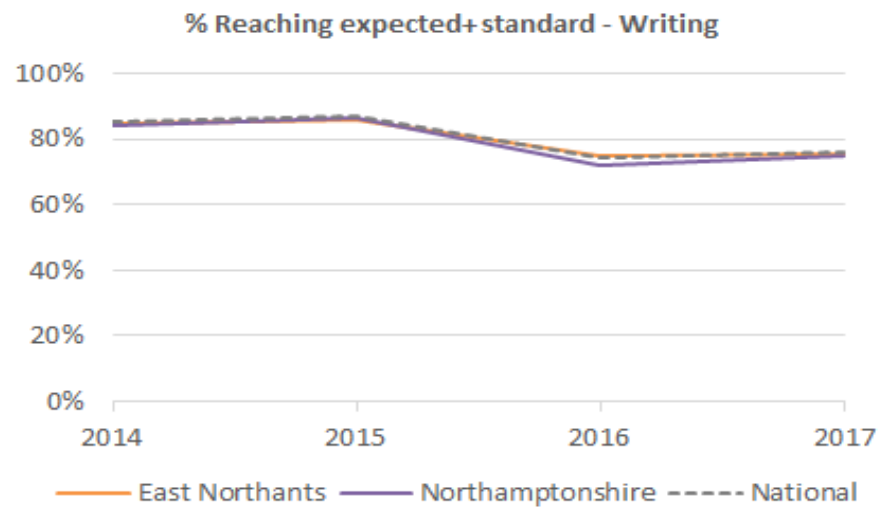
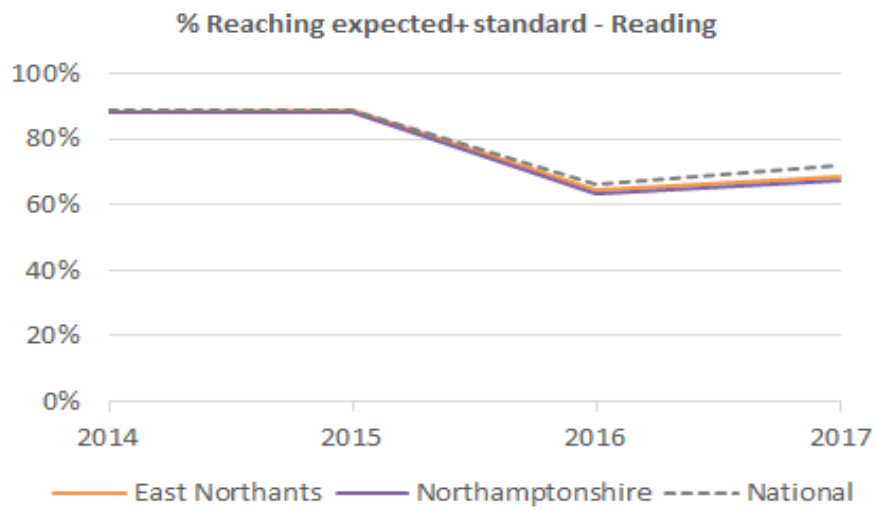
Cohort Numbers (Jan census 2018)



% EAL in each year group 2018



School Attainment



Source: Department for Education, 2017 and 2018