

Secondary School Child Health Profile

Daventry September 2018

Daventry is similar to the national England on the majority of the child health indicators included in this profile.

Daventry is significantly better than the national average on the following indicators:

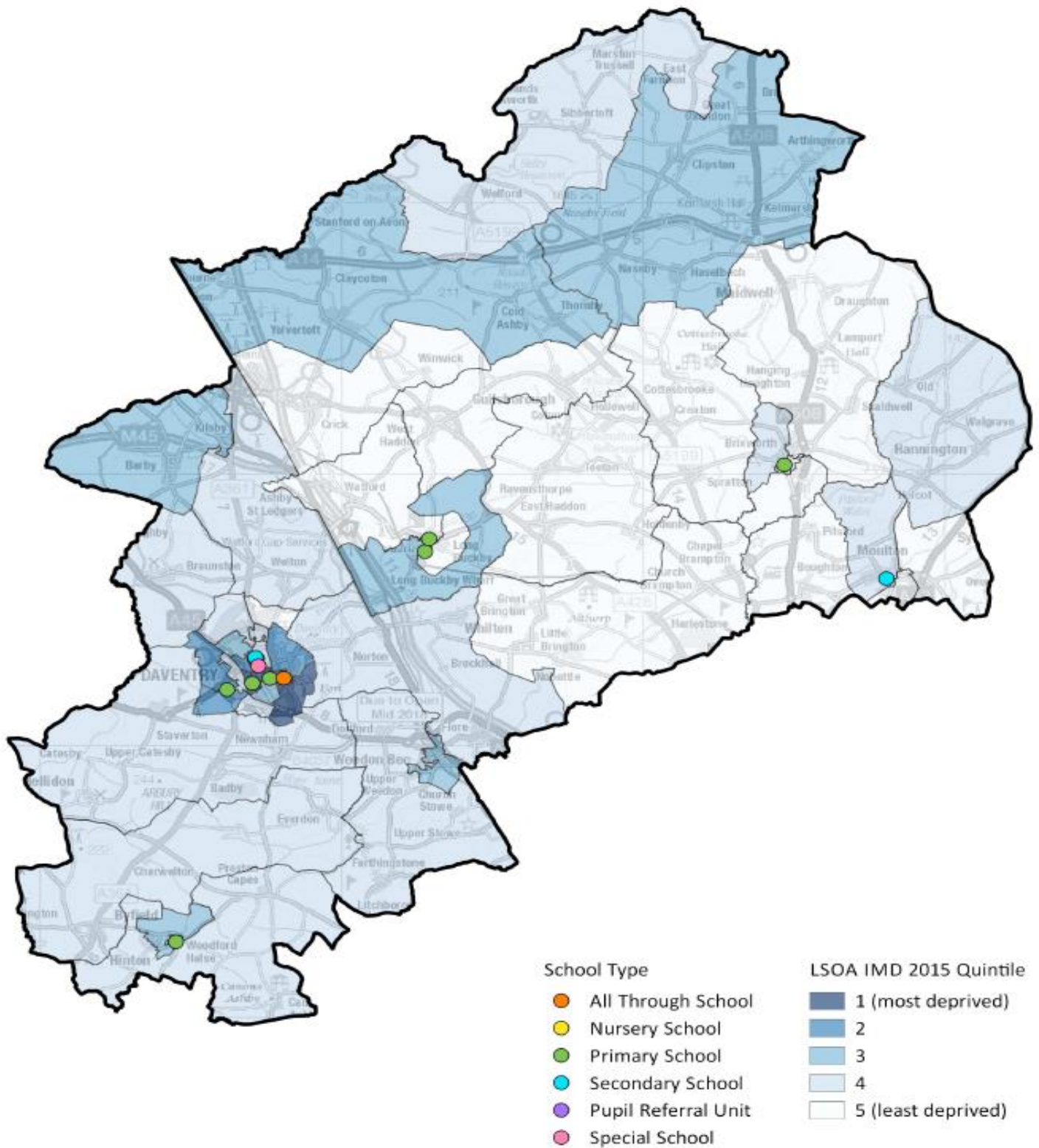
- Proportion of under 16s in low income families
- Proportion of full term babies with low birth weight
- Admissions to hospital for asthma, diabetes and epilepsy

Daventry is significantly worse than the national average on the following indicators:

- Rate of people killed or seriously injured on roads
- Proportion of pregnant women smoking at time of delivery
- Chlamydia detection rate (below target)
- Admissions to hospital for unintentional and deliberate injuries (aged 15 to 24 years)
- Admissions to hospital for intentional self-harm

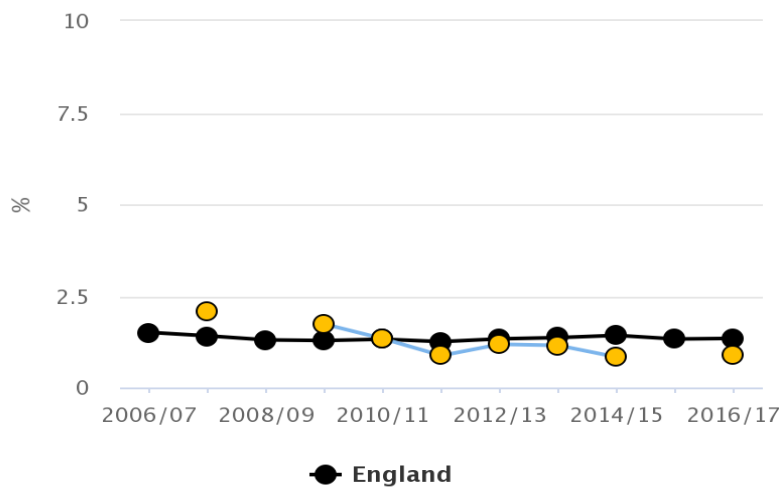
Area Map

Map of school locations with LSOA IMD 2015 quintile rankings
(1 being 20% most deprived areas nationally)

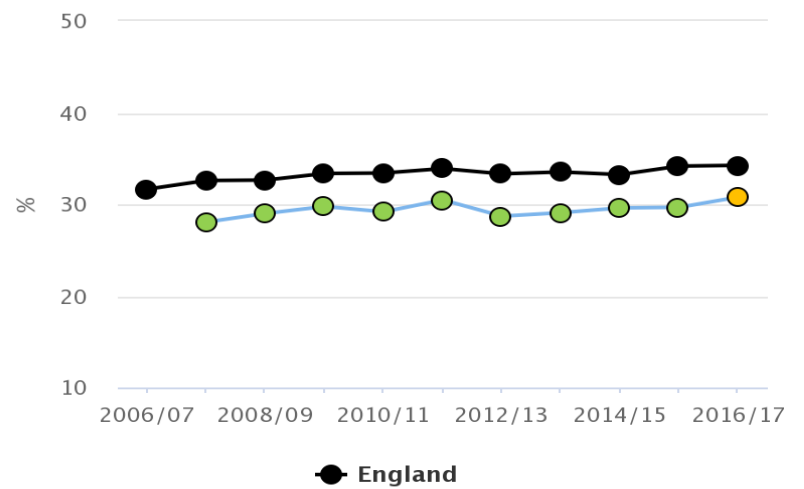


Health Improvement

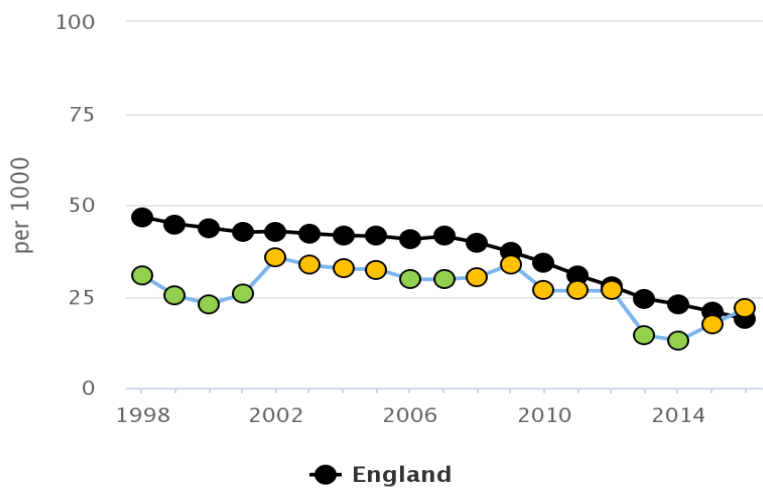
Year 6: Prevalence of underweight – Daventry



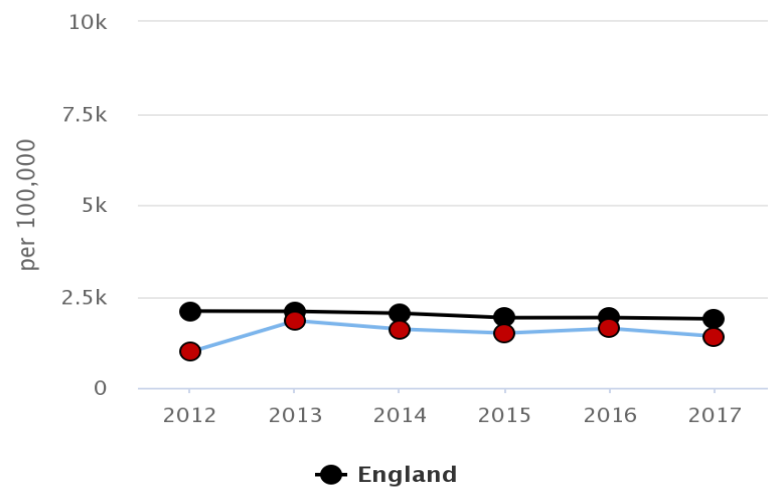
Year 6: Prevalence of overweight (including obese) – Daventry



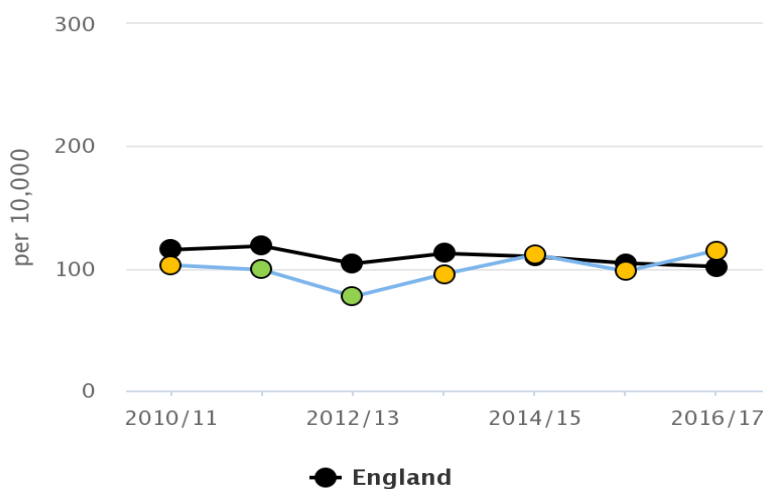
2.04 – Under 18 conceptions – Daventry



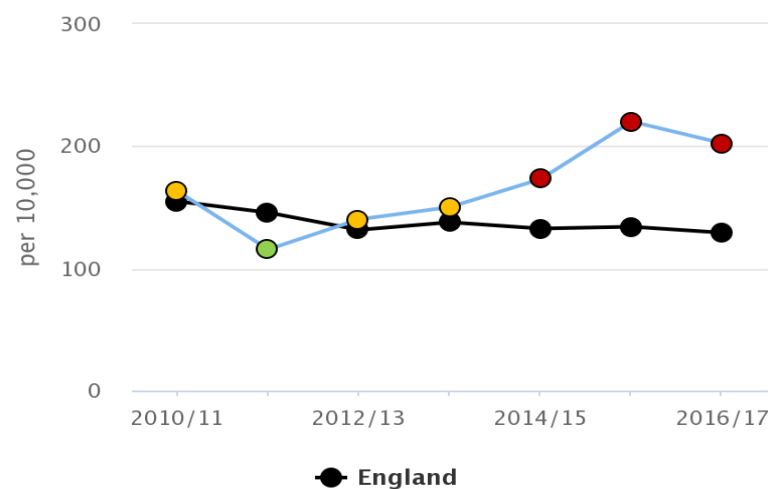
3.02 – Chlamydia detection rate (15–24 year olds) – Daventry



2.07i – Hospital admissions caused by unintentional and deliberate injuries in children (aged 0–14 years) – Daventry



2.07ii – Hospital admissions caused by unintentional and deliberate injuries in young people (aged 15–24 years) – Daventry



Key:

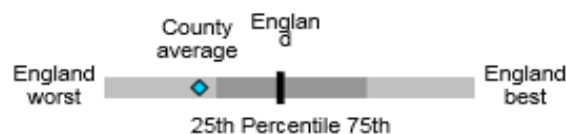
- Significantly better than the England average
- Not significantly different from the England average
- Significantly worse than the England average

Child Health Summary

The chart below shows how the health of children in this area compares with the rest of England. This area's result for each indicator is shown as a circle. The average for England is shown by the black line, which is always at the centre of the chart. The range of results for all local areas in England is shown as a grey bar. A red circle means that this area is significantly worse than England, while a green circle means that this area is significantly better than England for that indicator. However, a green circle may still indicate an important public health problem.

Key:

- Significantly better than England average
- Not significantly different from England average
- Significantly worse than England average
- No significance can be calculated



Indicator	Year	Unit	Local Value	Eng Avg	Eng Worst	England Range	Eng Best
1 Children in low income families (under 16s)	2015	%	9.8	16.8	30.5		2.7
2 GCSEs achieved (5A*-C including English & Maths)	2015/16	%	56.6	57.8	44.8		78.7
3 Pupil absence	2016/17	%	4.5	4.7	6.0		2.6
4 Killed and seriously injured on roads	2014-16	rate per 100,000	80.8	39.7	567.0		13.5
5 Low birth weight of term babies	2016	%	1.5	2.8	5.8		0.7
6 Breastfeeding initiation	2016/17	%	77.0	74.5	37.9		96.7
7 Smoking status at time of delivery	2016/17	%	13.8	10.7	28.1		2.3
8 5 year olds free of tooth decay	2016/17	%	79.2	76.7	50.6		95.6
9 Excess weight in Reception	2016/17	%	20.4	22.6	31.5		14.7
10 Excess weight in Year 6	2016/17	%	30.8	34.2	43.9		21.2
11 Teenage pregnancy rate	2016	rate per 1,000	21.6	18.8	36.7		3.3
12 Smoking prevalence - regular smokers aged 15	2009-12	%	9.3	8.7	12.9		3.2
13 Infant death	2014-16	rate per 1,000	3.5	3.9	7.9		0.0
14 Hospital stays for unintentional and deliberate injuries (0-14 years)	2016/17	rate per 10,000	114.9	101.5	190.5		43.3
15 Hospital stays for lower respiratory infections	2016/17	rate per 100,000	491.0	446.4	940.6		38.0
16 Alcohol specific hospital stays, under 18s	2014/15-16/17	n/a	26.0	34.2	100.0		6.5
17 Hospital stays for asthma, diabetes and epilepsy	2016/17	rate per 100,000	204.1	303.7	611.4		35.8
18 Hospital stays for intentional self-harm	2016/17	rate per 100,000	251.4	185.3	578.9		50.6
19 Deprivation score (IMD 2015)	2015	n/a	13.5	21.8	42.0		5.0

Sources: Public Health England (Public Health Outcomes Framework; Local Alcohol Profiles for England; Local Health; Local Authority Health Profiles)
NHS Outcomes Framework

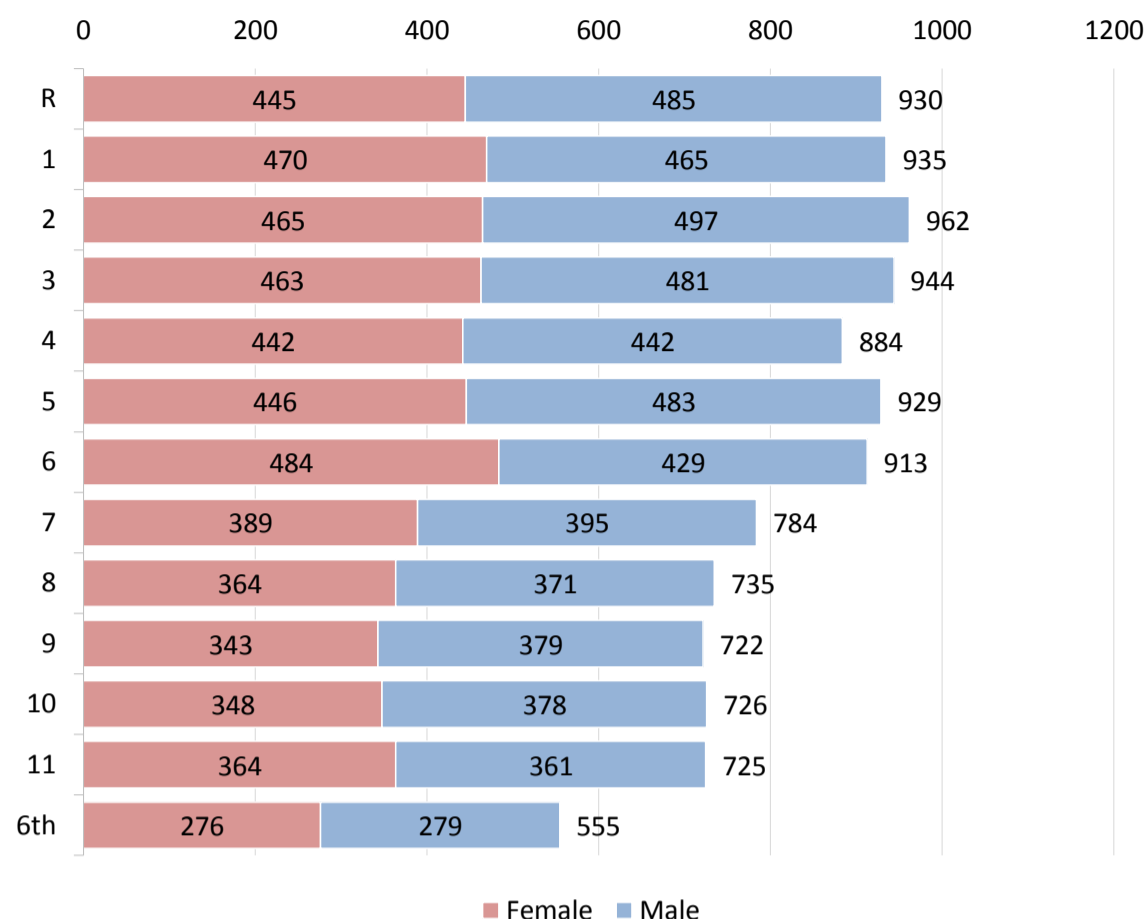
Data accessed August 2018

School Context Profile

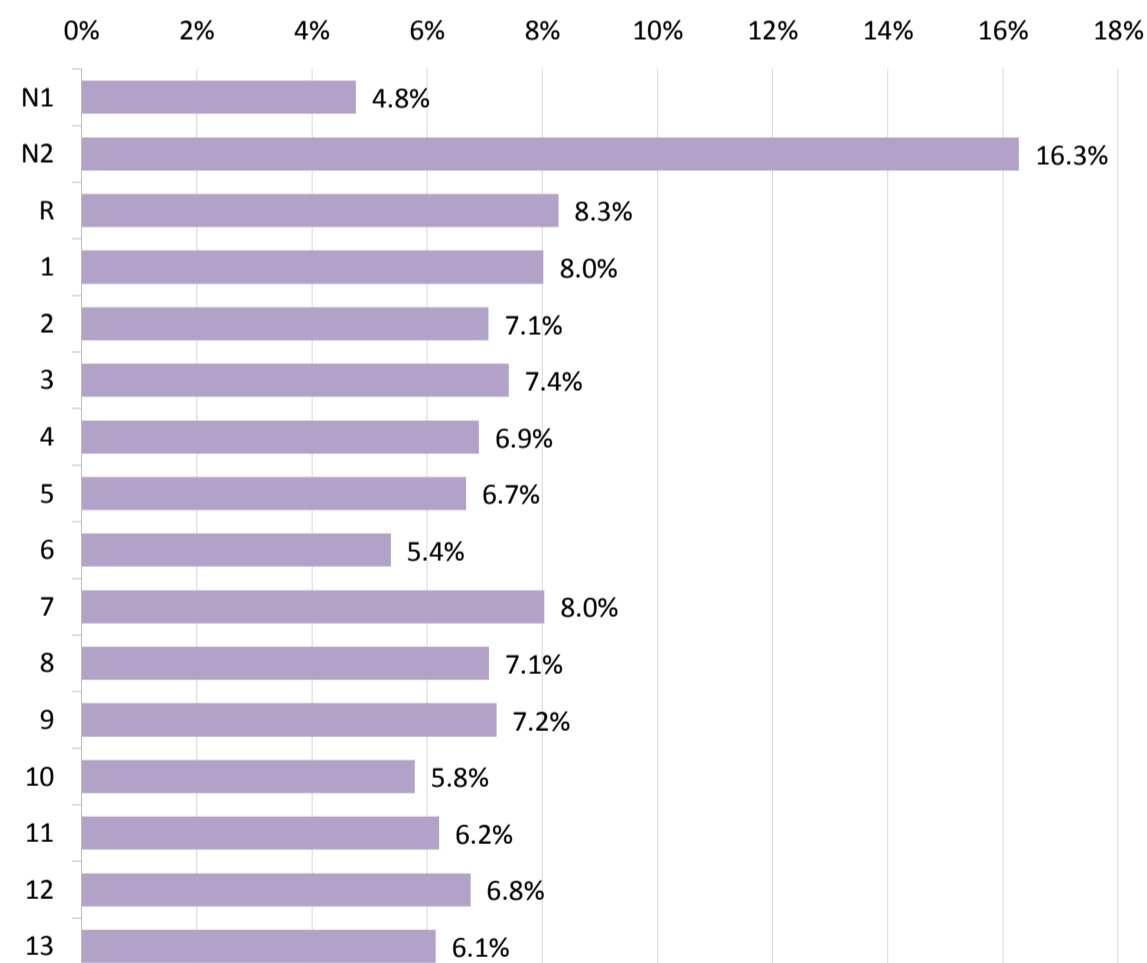
Demographics & Pupil Characteristics

Pupil Characteristics	2016	2017	2018
Number on Roll	10803	10812	10894
% Eligible for free school meals (Not USM)	2016	2017	2018
	9.2%	8.1%	8.3%
England % FSM Primary/Nursery	14.5%	14.1%	13.7%
England % FSM Secondary	13.2%	12.9%	12.4%
England % FSM Special	36.5%	35.9%	35.9%
% of each gender on roll	2016	2017	2018
Girls	49%	49%	49%
Boys	51%	51%	51%
Special Educational Needs	2016	2017	2018
% with SEN Statement/EHCP	1.2%	0.9%	0.7%
% with SEN but no Statement	8.8%	9.9%	10.2%
2018 Statements/EHCP England Primary = 1.4%	2018 Statements/EHCP England Secondary = 1.6%		
by Primary Need	2016	2017	2018
Autistic Spectrum Disorder	76	87	95
Behaviour, Emotional & Social Difficulties (SEMH)	220	245	24
Hearing Impairment	19	21	308
Moderate Learning Difficulty	267	297	<5
Multi-Sensory Impairment	<5	<5	26
Non Specific	36	37	56
Other Difficulty / Disability	33	35	31
Physical Disability	26	27	<5
Profound & Multiple Learning Difficulty	<5	<5	202
Speech, Language and Communication Needs	168	190	215
Severe Learning Difficulty	10	9	6
Specific Learning Difficulty	212	203	207
Visual Impairment	17	19	19
Language	2016	2017	2018
England Primary % with English as a second language	20.1%	20.6%	21.2%
England Secondary % with English as a second language	15.7%	16.2%	16.6%
School % EAL	6.2%	6.6%	7.1%
English	9919	9935	10114
Hungarian	16	21	24
Lithuanian	7	8	10
Latvian	9	10	11
Polish	207	231	253
Romanian	56	99	144
Serbian/Croatian/Bosnian	<5	<5	<5
Slovak	<5	<5	<5
Other	454	350	251
Ethnicity	2016	2017	2018
None required (under 5 pre-2017)	0%		
Bangladeshi	0%	0%	0%
Indian	1%	1%	1%
Other Asian	0%	0%	0%
Pakistani	0%	0%	0%
Black African	1%	1%	1%
Black Caribbean	0%	0%	0%
Other Black	0%	0%	1%
Chinese	0%	0%	0%
Other Mixed	1%	1%	1%
White/Asian	1%	1%	1%
White/Black African	1%	1%	1%
White/Black Caribbean	1%	1%	1%
Not Yet Obtained	0%	0%	0%
Other Ethnic Group	0%	0%	0%
Refused	0%	0%	0%
White British	88%	87%	86%
White Irish	0%	0%	0%
Irish Traveller	0%	0%	0%
White Other	4%	5%	6%
Gypsy/Roma	0%	0%	0%
Non White British	12%	13%	14%
England Primary % non WBRI	31.4%	32.1%	33.1%
England Secondary % non WBRI	27.9%	29.1%	30.3%
Davertry Exclusions	2014/15	2015/16	2016/17
Permanent	12	8	9
% of pupils Fixed	1.5%	2.1%	1.7%
Northamptonshire Exclusions	2014/15	2015/16	2016/17
Permanent	139	95	141
% of pupils Fixed	1.8%	2.1%	2.2%

Cohort Numbers (Jan census 2018)

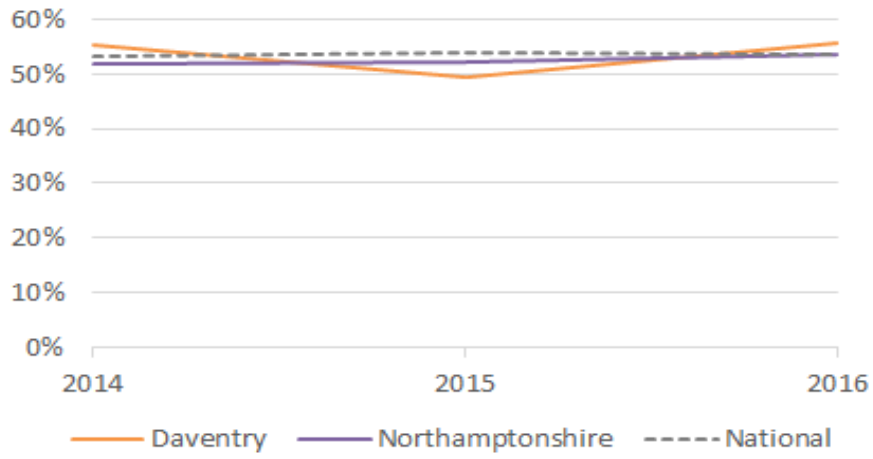


% EAL in each year group 2018

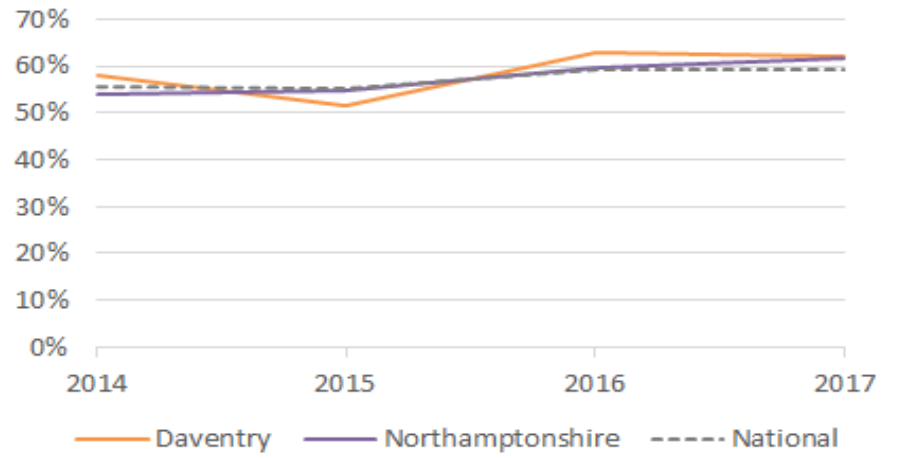


School Attainment

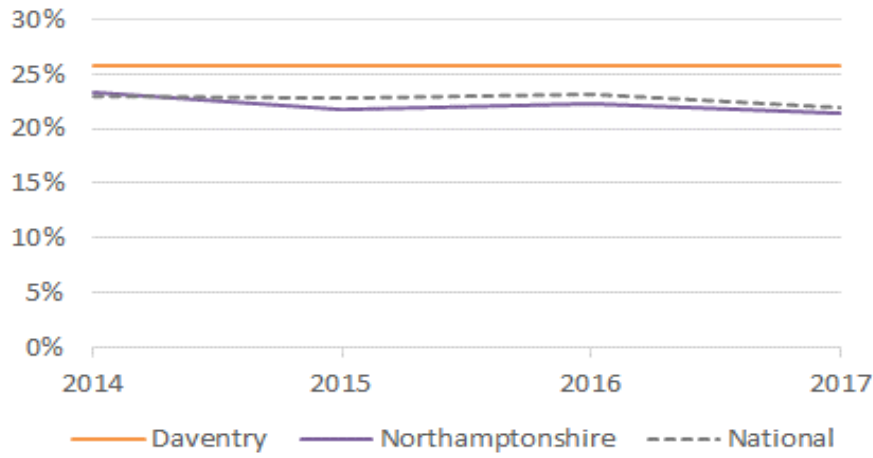
Key Stage 4 - 5+ A*-C inc English & Maths



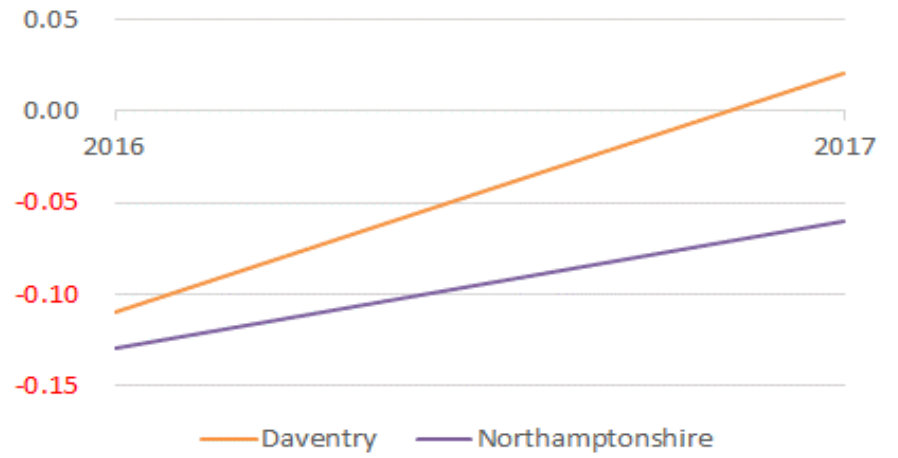
Key Stage 4 - A*- C in English & Maths (grade 9-4 2017)



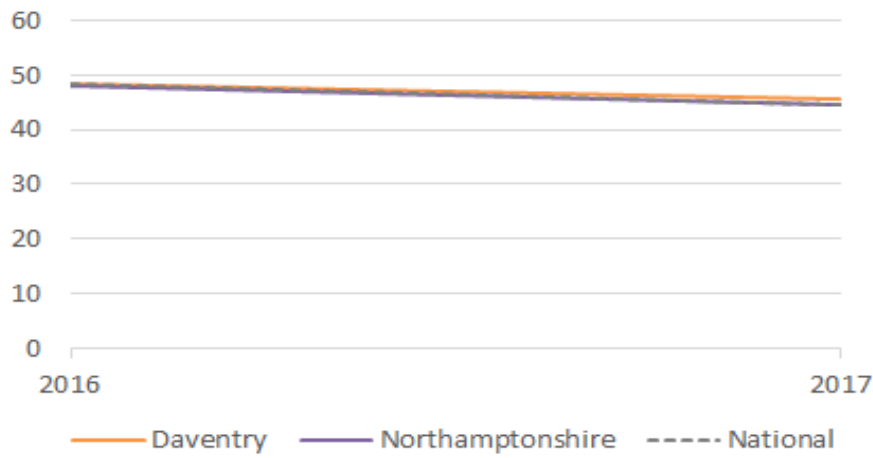
Key Stage 4 - EBACC



Key Stage 4 - Progress 8



Key Stage 4 - Attainment 8



Source: Department for Education, 2017 and 2018