

WEST NORTHAMPTONSHIRE JOINT CORE STRATEGY LOCAL PLAN (PART 1)



ADOPTED - DECEMBER 2014



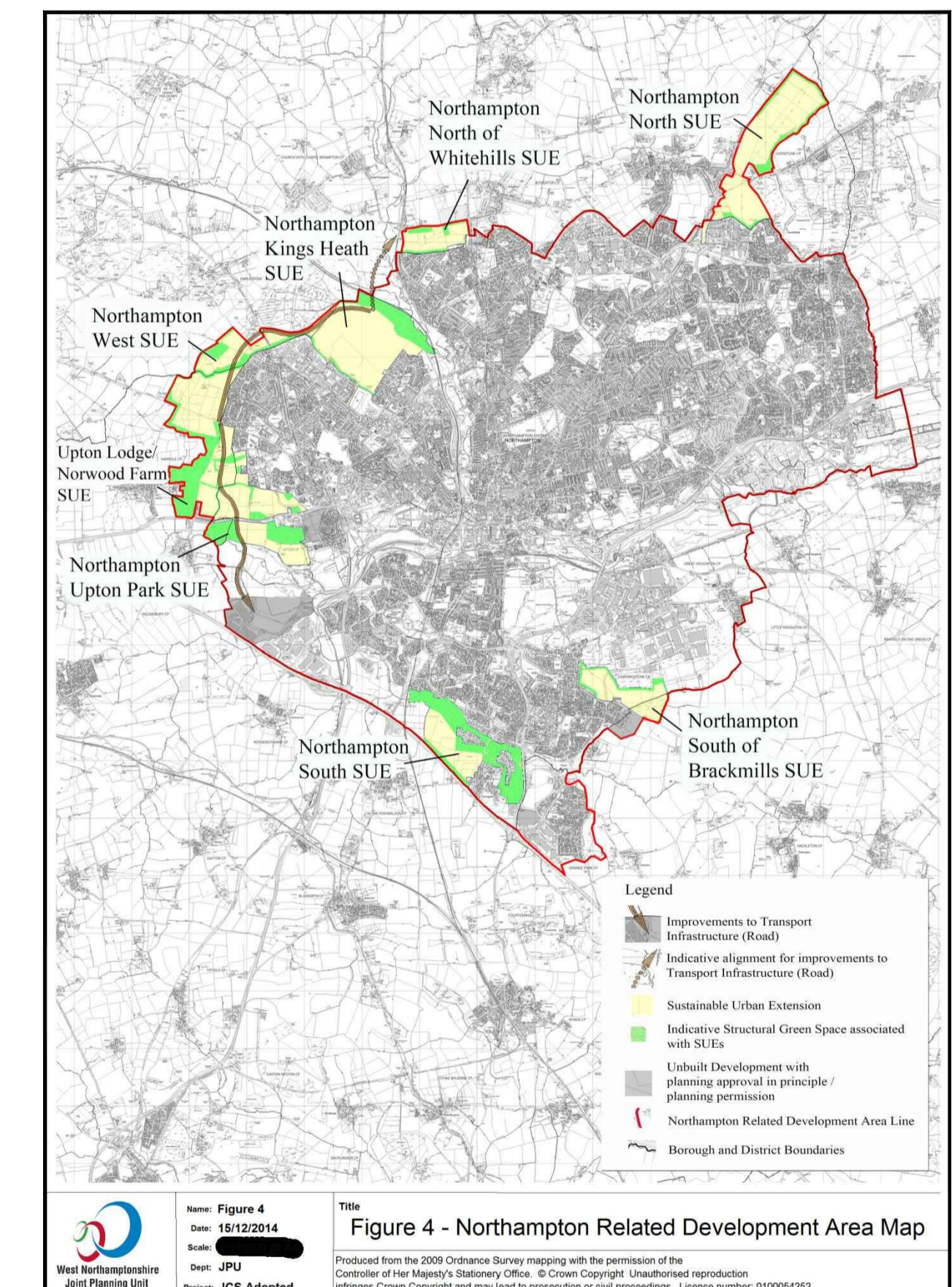
The Northampton Northern Orbital Route is needed to help mitigate the impact of the growth proposals for Northampton where some 10,000 new homes are planned to the north and west of the town.

The Northampton Northern Orbital Route will help reduce future traffic flows in the northern parts of Northampton and surrounding villages such as Boughton, Moulton and Pitsford.

ADOPTION OF THE WEST NORTHAMPTONSHIRE JOINT CORE STRATEGY LOCAL PLAN (Part 1). Adoption 15th December 2014

The West Northamptonshire Joint Strategic Planning Committee adopted the West Northamptonshire Joint Core Strategy Local Plan (Part 1) on 15th December 2014.

The Adopted West Northampton Joint Core Strategy sets out the long term vision and objectives for the development of the area upto 2029. It identifies key locations for new strategic housing, employment sites, changes to infrastructure and community facilities.



Proposed Housing Delivery - By Plan Area				
	Total Housing Delivery 2001-2029	Completions 2001-2006	Completions 2006-2011	Remaining Delivery Planned 2011-2029
Daventry District (excluding NRDA)	9,839	1,725	1,130	6,984
Northampton Related Development Area	39,256	6,550	4,235	28,471
South Northamptonshire Council (excluding NRDA)	9,905	1,600	1,130	7,175
Total	59,000	9,875	6,495	42,630

NORTHAMPTON NORTHERN ORBITAL ROUTE: Planned Development in and around Northampton

Northamptonshire Highways